

By order of the Administrators of Corinthian Plant Ltd

Two-Storey Set of Modular Site Office & Welfare Cabins

(Subject to availability)



Please be aware that this is a PPE site – visitors must wear adequate PPE at all times

PRIVATE TREATY SALE: This is offered for sale by Private Treaty negotiations and offers are invited

AT: Hayle, Cornwall

ON VIEW: By Appointment Only

OFFERS INVITED: Immediately

CLEARANCE: By Appointment

FURTHER INFO: Rob Fewins 07938 738196 RFewins@lsh.co.uk

OFFICE ADDRESS: Sterling Court, 16 Dix's Field, Exeter, EX1 1QA



First Floor Offices



Waiting Area



Conference Room



Board Room



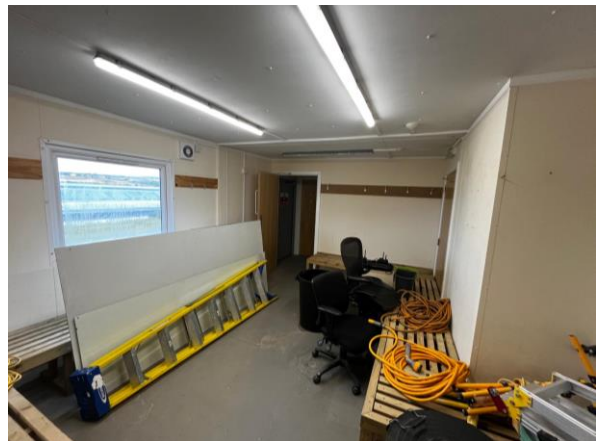
Overview



Ground Floor Site Storage



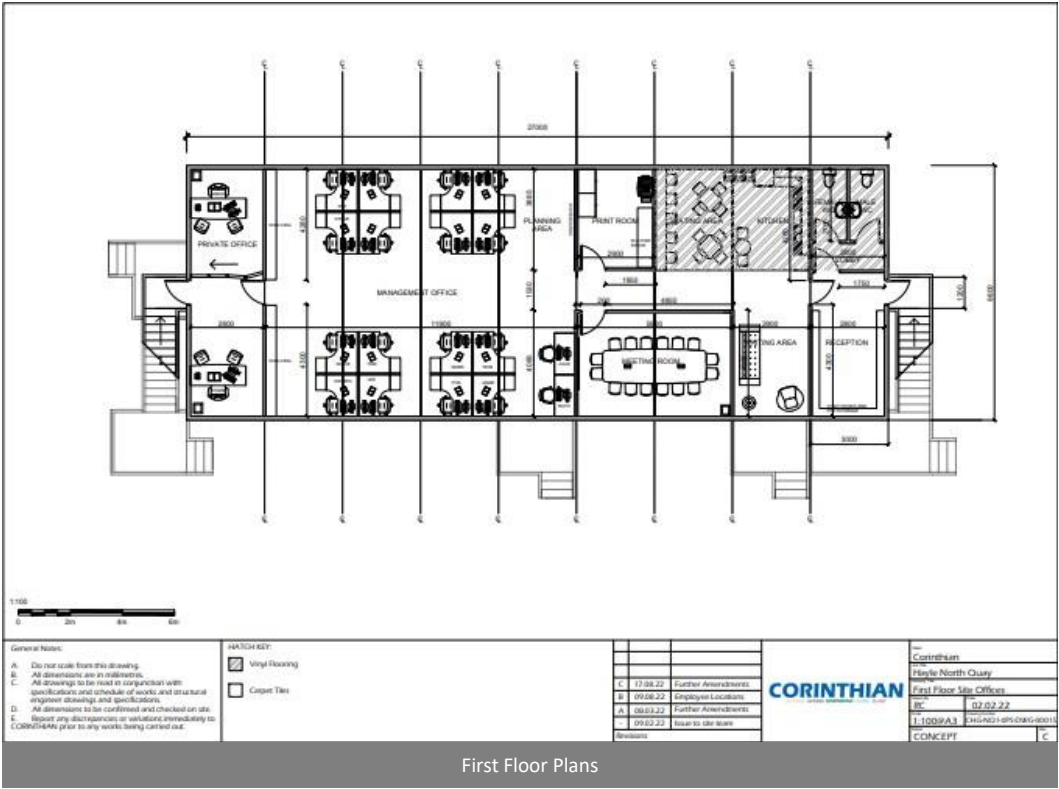
Welfare



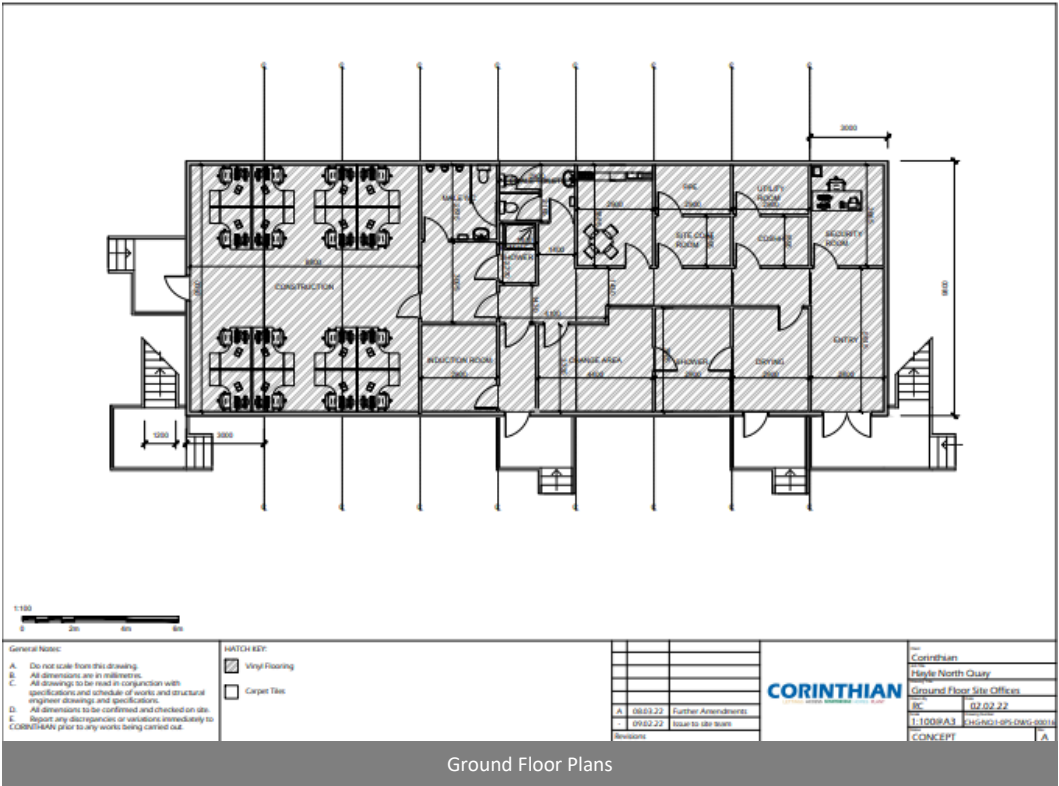
Site Changing Room



Rear of Modular Cabins



First Floor Plans



Ground Floor Plans



Equipment To Include;
(Subject to availability)

One x18 cabin, two-storey modular site complex.

- Ground floor featuring open and enclosed office space, changing rooms, canteen, & welfare.
- First floor featuring; open plan & enclosed offices, board rooms, & welfare.

Please note, no furniture shown in the images will be included in this sale. The cabins will be cleared prior to collection.

For further details & images, please contact Rob Fewins on Rfewins@lsh.co.uk or 07938 738196