

By order of Jo Milner and David Buchler of Buchler Phillips the Joint Administrators of Nicol and Andrew Ltd
and the Joint Liquidators of Hempstead & Johnson Ltd

CONTENTS OF A GENERAL MACHINING WORKSHOP

(Subject to availability)



Please be aware that this is a PPE site – visitors must wear adequate PPE at all times

| | |
|------------------------|---|
| ONLINE AUCTION: | To bid please go to www.lsh.co.uk/assetadvisory/online-auctions or BidSpotter.co.uk <small>powered by atgmedia</small> |
| AT: | Mayday House, Oakridge Road, High Wycombe HP11 2PF |
| ON VIEW: | Tuesday 29 th July 2025, 8.00 am – 3.00pm |
| BIDDING ENDS: | From 12 noon on Wednesday 30 th July 2025 |
| CLEARANCE: | Monday 4 th August 2025 to Friday 8 th August 2025, 8.00 am – 3.00pm |
| FURTHER INFO: | Kevin Powell 07976 732244 kpowell@lsh.co.uk |
| BID ENQUIRIES: | AA Accounts 023 8046 1643 aaaccounts@lsh.co.uk |
| OFFICE ADDRESS: | 55 Wells Street London W1T 3PT |

General Machining Workshop Equipment, Plant & Machinery, Equipment, Racking, Stock Etc.,

(subject to availability)

Plant & Machinery: to include Hurco VM20i machining centre (2020), Deckel Maho DMC103V machining centre, Haas TL3CE CNC lathe, Collett & Engelhard borer, Rambaundi Versamill milling machine, Burkhardt Weber HYOP80 jig borer, Mattei Blade 7L air compressor set, various Colchester, Hardinge & MWM lathes, Bandsaws etc.,

Equipment: to include Shipping containers, 8 tonnes and 4 tonnes gantry cranes, racking, pallet trucks, bottle trollies, tooling lifts, work benches, platform scales, strapping kits, mobile lifting platforms, surface plates, shop presses, lifting attachments, machine vices, belt sanders, fly presses, skates, bench & floor grinders, etc.,

Stock: to include Stock of various metal tubes and bars.

Office Equipment: to include desks, chairs, storage, computer equipment, printers, photocopiers etc.,

Vehicles: to include Two Renault Master LM35 LWB medium roof panel vans (2017 & 2016), Ford Transit Connect 2000 diesel panel van (2017), Renault Kangoo ML19 diesel panel van (2014), Peugeot Partner 85D diesel panel van (2016), Hyundai 140 5 door diesel tourer (2015).



Haas TL3CE CNC Lathe



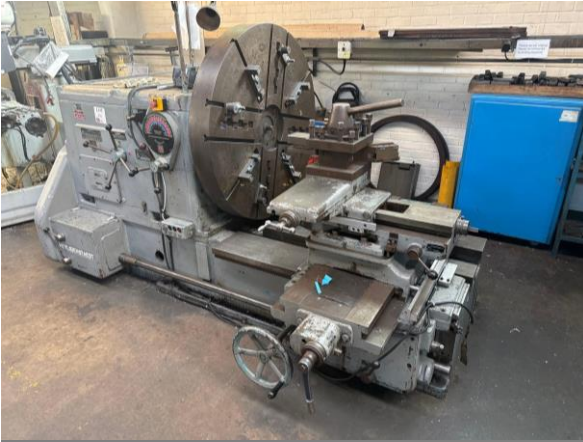
Deckel Maho CNC Machining Centre



Rambaundi Versa Mill



Collett & Engelhard Horizontal Borer



Heyligenstaedt & Comp Boring Machine



Kingridge SM2000 Vertical Mill



Hardinge KL-1 Lathe



XYZ DPM4000 Vertical Mill



Triumph Colchester Lathe 1200mm bed



Bridgeport series 1.2HP flat bed lathe



Colchester Triumph 2000 flat bed lathe



Burkhardt Weber HYOP80 Jig Boring Machine



Jones & Shipman Cylindrical Grinder



Jones & Shipman Surface Grinder



Webster & Bennett Vertical Borer



Dean Smith & Grace Type 21 Lathe



Bridgeport Vertical Mill



Dean Smith & Grace Type 21 Lathe



Dean Smith & Grace Type 21 Lathe Tooling



Dean Smith & Grace Type 21 Lathe



Jones & Shipman cutter grinder



Jones & Shipman surface grinder with magnetic machine vice



Europa 7530 surface grinder



Dorma 108 drill sharpener



Bridgeport Milling Machine



Jones & Shipman cylindrical grinder



J Mills 25 ton press



SIP 18" horizontal bandsaw



Startrite bandsaw



Mattei Blade 7L air compressor set



Hyster S80B LB gas forklift



Genie 1000Lb platform lift



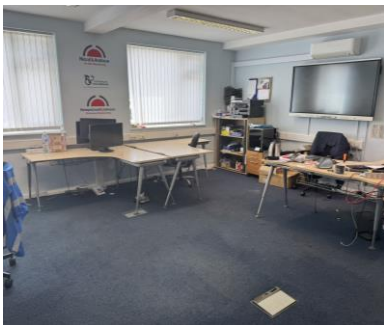
Shipping Containers



Metal tube & bar stock



Pallet Racking



Office Furniture



Computer Equipment



Two Gantry Cranes



Renault Master LM35



Ford Transit Connect 200



Renault Master LM35



Renault Kango ML19



Peugeot Partner 85D



Hyundai 140 tourer