

By order of the Proposed Liquidator of I Knibb and Son Ltd

CNC & CONVENTIONAL MACHINE TOOLS, SHEETMETAL & FABRICATION EQUIPMENT, FACTORY EQUIPMENT, TOOLS, VAN

(Subject to availability)



Please be aware that this is a PPE site – visitors must wear adequate PPE at all times

ONLINE AUCTION:

To bid please go to www.lsh.co.uk/mba

or

BidSpotter.co.uk
powered by atgmedia

AT:

Penpoll Mill, Trenarth Bridge, Falmouth, Cornwall, TR11 5LN

ON VIEW:

Wednesday 8th September 2021 from 10 am to 4 pm (Strictly by Appointment)

BIDDING ENDS:

Friday 10th September 2021 @ 3 pm

CLEARANCE:

Wednesday 15th - Wednesday 22nd September 2021 (excluding Weekends) between 10 am and 4 pm

FURTHER INFO:

Matthew Hartley mhartley@lsh.co.uk

BID ENQUIRIES:

MBA Accounts 023 8046 1643 mbaaccounts@lsh.co.uk

OFFICE ADDRESS:

Sterling Court, 16 Dix's Field, Exeter, EX1 1QP

www.lsh.co.uk/mba

The property, plant and machinery specialist

CNC lathes

Harrison Alpha 1660 XS CNC centre lathe, 660mm swing over bed **(2020)**, **Colchester Tornado** 300 slant bed, **Colchester** 4000L (2 off), **Cincinnati TC-200M** slant bed

CNC VMC's

Hardinge Brideport GX1100 (2011), 1120mm bed, **Takumi Seiki V11A**, 1350mm bed, **Cincinnati Milacron** Sabre, 1350mm bed

Conventional

Webster Bennett 36" vertical borers, elevating and fixed rail (2 off), **Ajax** TM50 series 3 ' 1600 Hydrobloc radial arm drill (2007), **Kitchen & Walker** KWM50-1600 radial arm drill (1997), **Kearns** No 3 horizontal travelling spindle borer, **Thomas** 310 AO horizontal bandsaw, **Rambaudi** Ram-Mill vertical mill, **Cincinnati** 310-16PL EDO horizontal mill with vertical head, **Fromag** vertical slotter, **Brierley** ZB500 drill point grinder, **Q&S** 36" radial drill, 10" rotary grinder, **Herbert** 47V vertical mill, **Butler** shaper, MEP cut off saw, **Mills** C frame press, various Capstan lathes, drills, double ended grinders, etc.

Sheetmetal & Fabrication

Ercolina TB-76 tube bender (2007), **Rushworth** 6ft x 3/8" guillotine, **Kingsland** J21XA steelworker, 2000mm bending rolls by **Pullmax** and **RAB**, **FJ Edwards** 6ft straight folder, **Miller** Migatron 333 mig welders (3 off), **Stel Thor** 63 stud welder, **Oster** 655 pipe threader, arc welders, hand shears, **Nederman** fume extractors, etc.

Factory Equipment

Forklift trucks, 1800kg by **Mitsubishi** FD18N diesel and **Daewoo** B18T-2 battery operated, air compressors by **Worthington Creyssensac** Rollair 2000 and **Compair Broomwade** 6000E, jib arm and other electric chain hoists, etc.

Tools / Inspection

excellent range of milling adaptors, vices, indexing heads, consumable cutting tools, manual inspection equipment – circa 200 to 300 lots

Vehicle

Citroen Relay 35 L3 Blue HDI 2.0 dropside truck, 34k mileage **(2019)**

CNC Lathes



Colchester / Harrison Alpha 1660 XS CNC SS & SC gap bed centre lathe, serial no. X85015 (2020), max rpm 2000, Fanuc Series Oi-TF control, fitted rotary 8 station turret tailstock, 3 jaw chuck



Cincinnati TC-200M CNC slant bed CNC lathe, serial no. 7052-F00-KK0157



Colchester Tornado 300 slant bed CNC lathe, serial no. C30042 (1995), GE Fanuc Series 0-T control, 8 station rotary turret tailstock and 3 jaw chuck



Colchester CNC 4000L CNC SS & SC centre lathe, serial no. L4/805FBSA/01250, GE Fanuc OT control, fitted rotary turret tailstock (out of commission - board gone, ball screws needs replacing)



Colchester CNC 4000L CNC SS & SC centre lathe, serial no. L4/805FBSA/01250, GE Fanuc OT control, fitted rotary turret tailstock (out of commission - board gone, ball screws needs replacing)

CNC Vertical Machining Centres



Hardinge Bridgeport GX 1000 CNC 3 axis vertical machining centre, serial no. NVCB1D0061 (2011), Fanuc Series Oi-MD, 20 ATC, table size 1120 x 540mm, max spindle speed 8000 rpm



Takumi Serki V11A CNC vertical machining centre, serial no. G0698 (1998), non branded controller, table size 1350 x 500mm, 24 station ATC, fitted 4 axis



Cincinnati Milacron Sabre CNC vertical machining centre, serial no. 7037-800-RH-0162, GE Fanuc Series O-M control, ATC, table size 1350 x 650mm



Conventional



Webster & Bennett 36" fixed rail vertical borer, 5 station turret, fitted Acu-lite DRO and guarding



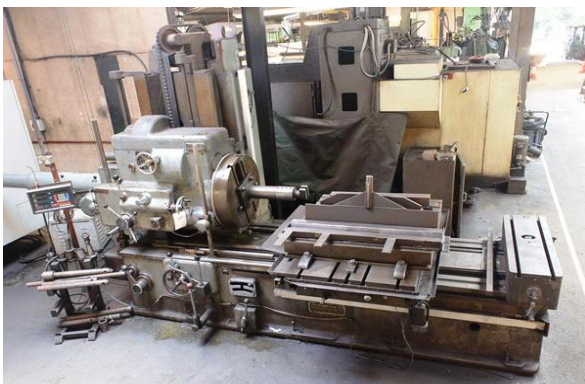
Webster & Bennett 36" elevating rail vertical borer, 5 station turret, fitted Newall DP 700 digital read out, and guard



Kitchen & Walker KWM50-1600 elevating column radial arm drill, serial no. 3620 (1997), rise & fall arm.



Ajax 1600mm elevating column radial arm drill, model TM50 Series 3/1600 Hydrobloc, serial no. 40008 (2007), radial digital read out



Kearns No 3 travelling spindle horizontal borer, serial no. 5263, cross feed table, with sub table, fitted Newall 2 axis digital read out



Thomas 310 A.O. mitre base horizontal bandsaw, with auto infeed



Rambandi Ram-Mill heavy duty vertical mill, 1800 x 500mm table size, fitted guarding



Cincinatti horizontal mill with power over arm, and swivel vertical head, serial no. 11A3F5RE-13, model 310-16 PL EDO, table size 68mm x 16mm, with 3 axis digital read out



Fromag hydraulic slotter, type KZM 32/300, serial no. AKK26174 (1965)



Herbert 47V vertical mill, serial no. 4T17303



Mills 'C' frame hydraulic vertical press, table size 48" x 15", approx 50 ton



Herbert 6-in-line pillar drill with rise & fall table

Sheetmetal & Fabrication



Ercolina TB-76 hydraulic tube bender, serial no. 3307044 (2007), with separate table on feed system



Rushworth 6' x 3/8" mechanical down stroking guillotine with manual back gauge and front supports



Kingsland J21XA mechanical steel worker, serial no. 212178



Pullmax 2000mm powered bending rolls



Miller Migmatic 333 mig welder (3 off)



FJ Edwards 6ft hand operated mechanical straight folder

Factory Equipment



Mitsubishi 1800kg diesel ride on, dual mast forklift truck, model FD18N, serial no. EF16D 40285 (2008)



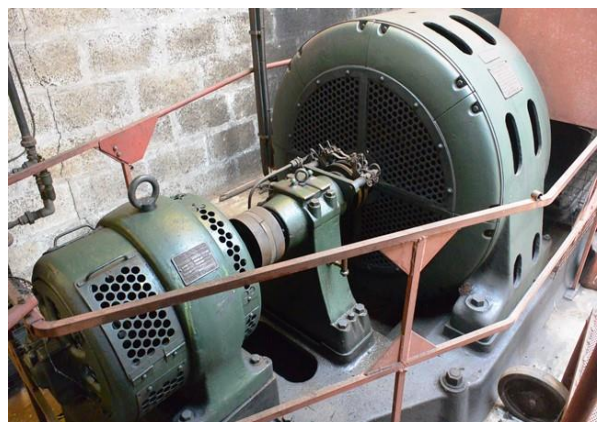
Daewoo 1800kg battery operated, ride on dual mast forklift, model B18T-2, serial no. CM00491, 11,973 recorded hours, fitted side shift,



Worthington Creyssensac Rollair 2000 packaged rotary screw air compressor set, model RLR 2000 AE7, serial no. 6730372300/WCO0053112



Compair Broomwade 6000E packaged rotary screw air compressor set, with dryer



Blackstone Back-up generator set, capacity 93.75 kva, electric construction alternator engine

Various Pillar Jib cranes and chain hoists

Tooling, Inspection and Motor Vehicle



Excellent range of milling adaptors, vices, indexing heads, consumable cutting tools, circa 150 lots

Range of manual inspection equipment, circa 100 lots



Citroen Relay 35 L3 Blue HDi 2.0 LWB dropside truck, reg no: WK69 ONW (2019), MOT: 1/9/22, recorded mileage: 34,240