



On the instructions of Mark Newman and Vincent Green of Crowe U.K. LLP Joint Administrators of The Dorothy Kerin Trust, t/a Burrswood Health and Wellbeing

Healthcare Equipment & Furniture, Commercial Catering Equipment, Home Furnishings & General Commercial Equipment

(Subject to Availability)



ONLINE AUCTION: To bid please go to www.lshmachinerysales.co.uk or **BidSpotter.co.uk** powered by atgmedia

AT: Bird in Hand Street, Groombridge, Tunbridge Wells, Kent TN3 9PY

ON VIEW: Saturday 30th November and Monday 2nd December 2019 10am - 4pm

BIDDING ENDS: Thursday 5th December 2019 at 1pm

CLEARANCE: Monday 9th to Friday 13^h December 2019 10am - 4pm

FURTHER INFO: Kevin Powell 020 3824 4751 kpowell@lsh.co.uk

BID ENQUIRIES: MBA Accounts 023 8046 1643 mbaaccounts@lsh.co.uk

OFFICE ADDRESS: UK House, 180 Oxford Street, London W1D 1NN

Equipment and furnishings to include (subject to availability)

Healthcare equipment and furniture including Arjo assisted baths, Luna person hoists with rails, electric standing aids, electric patient lifts with hoists, Linak automatic height adjustable shower trolleys, wheelchairs, minor medical equipment, physiotherapy rehabilitation equipment and beds, electric profiling beds, pressure reducing mattresses, electric adjustable armchairs, etc.

Commercial catering equipment including Rational CD combi-dampfer combination oven, Rational SCC combination oven, Electrolux NHTBG dishwasher, Falcon 900SX range cooker, Alcon pizza ovens, Mareno gas burner range ovens, Hobart dough maker, Crypto Peerless mixers, commercial microwaves, refrigerated prep counters, blast chillers, fridges, freezers, hot water boilers, glass washers, etc.

Home furnishings including guest room furniture and accessories, dining room furniture and accessories, framed photos and prints, Kemble piano, garden furniture, etc.

General commercial equipment including Stainless steel commercial washing machines and tumble dryers, Electrolux rotary iron, Stanbridge disinfection washers, Rotowash floor cleaners, POS systems, office furniture, etc.



Commercial Kitchen Equipment



Card and Bookshop Contents



Healthcare and Mobility Equipment



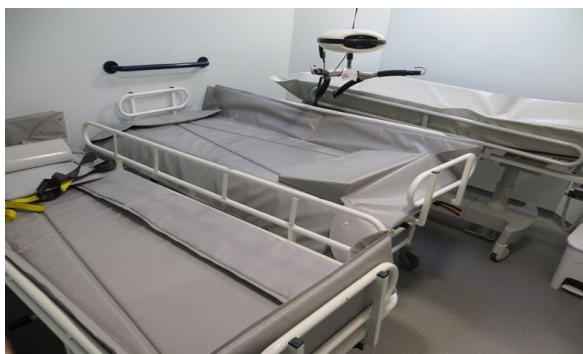
Single Electric Profiling Beds with Medical Mattresses



Arjo Keyhole Assisted Bath & Shower



Chiltern Electric Person Hoists with Rails



Linak Automatic Shower Trolleys



Physiotherapy Equipment and Beds



Invacare REA Azalea Assist Tilt in Space Wheelchair



Arjo Parker 420 Assisted Bath & Shower



Seating Matters Monaco Riser electric chairs



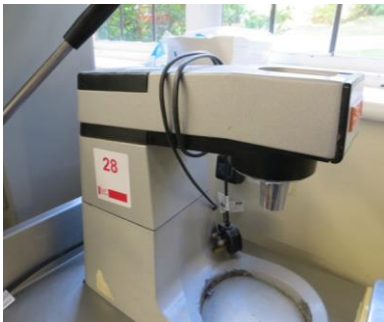
Arjo Minstrel Patient Lift



Rational SCC Gas Oven



Falcon Pizza Ovens



Crypto Mixers



Rational CD Combi-Dampfer Combination Oven



Falcon 900SX Series Range Cooker



Mareno 4-Gas Burner Range Ovens



Expobar Markus Coffee Machine



Hobart A120 Dough Mixer



Crypto Peerless Mixer



Electrolux Standard Hood Dishwasher



Foster Gastronorm Supra Warmer Cabinet



Residential Furniture and Accessories



Residential Furniture and Accessories



Residential Furniture and Accessories



StanBridge Disinfection Washers



Primus FS10 Washing Machine



Electrolux Rotary Iron



Office Furniture (excluding IT)



Primus Twin Drum Tumble Dryer

NOTICE TO PURCHASERS

VIEWING:

- The lots may be viewed as follows:
 1. **Saturday 30th November between 10.00am and 4.00pm**
 2. **Monday 2nd December 2019 between 10.00am and 4.00pm**
- Located at: **The Dorothy Kerin Trust t/a Burrswood Health and Wellbeing, Bird in Hand Street, Groombridge, Tunbridge Wells, Kent, TN3 9PY.**

BIDDING ENDS:

- Bidding will end from: **1.00pm on Thursday 5th December** [subject to the normal 10 min extension] **AT WHICH TIME ALL HIGHEST BIDS WILL BE CONSIDERED.**

ACCEPTANCE OF FINAL HIGHEST BIDS – IMPORTANT NOTE:

- **Acceptance of all final highest bids is subject to approval by our client.**
- Lambert Smith Hampton reserves the right to reject any bids which they feel does not reflect reasonable value
- Successful bidders will be notified by email by **5.00pm on Friday 6th December 2019**

INSTRUCTIONS FOR BIDDING:

- Access for bidding can be obtained through our website www.lshmachinerysales.co.uk
- Full details including valid email address must be provided in order to receive approval for bidding
- In the event of a bid being received within 10 minutes of the scheduled closing time, the bidding period on that lot will automatically extend by a further 10 minutes and for a further 10mins for any bid received thereafter.
- **MAXIMUM BIDS:** If more than one maximum bid is placed of the same amount, the maximum bid placed first will be considered the highest bid and a further bid will need to be placed to take the lead. Bidders are notified by an automated message which appears on their screen
- **IMPORTANT:** When bidding, do not forget to **'REFRESH'** your screen to ensure you are aware of current bids.
- **MAILING:** All approved bidders will automatically have their details placed on our database for notification of futures sales undertaken by Lambert Smith Hampton only. In the event that you wish to have your details excluded from our database, please use the 'unsubscribed' feature within our website (as above) alternatively please notify our Sales Administration Team mbaaccounts@lsh.co.uk

BUYERS PREMIUM:

- The purchaser will pay a buyers premium of **16%** plus VAT, which will be charged on all lots.
- The premium is not negotiable and will be paid by all buyers

PAYMENT TERMS:

- All purchases are to be paid in full, no later than **5.00pm on Wednesday 11th December 2019**
- All queries regarding payment should be directed to our Sales Accounts team, mbaaccounts@lsh.co.uk
- Please note that we do not have the facility to accept debit or credit card payments (the details required when signing up are for name and address validation purposes only).

Please refer to the page headed "PAYMENT DETAILS" for acceptable methods of payment

PURCHASERS WHO MAKE OVER THE COUNTER PAYMENTS AT THE BANK WILL HAVE THEIR COLLECTION STALLED UNTIL THE BANK HAVE CONFIRMED IT IS A LEGITIMATE CASH PAYMENT.

VALUE ADDED TAX:

- Purchasers will be charged Value Added Tax on all lots, where applicable, at the current rates

DEPOSITS:

- Purchasers are required to pay a deposit on lots which will cause damage or leave a hole in the fabric of the building after removal. These lots will be specified in the sale catalogue. The deposit will be returned once the purchaser has made good in a satisfactory manner.

RISK:

- The bidder / buyer is at risk once the buyer is notified of his successful purchases and is strongly advised to effect insurance at once, irrespective of whether title has passed. Title does not pass to the purchaser until payment has been received in full.

RECORDED "USEAGE" READINGS: The hour and odometer readings on machinery and vehicles in this sale cannot be warranted and should not be relied upon.

COMPUTER SOFTWARE: Due to the Data Protection Act, all software and data will be removed from computers prior to selling.

CLEARANCE TERMS AND ARRANGEMENTS

- Lots to be removed from **Monday 9th December to Friday 13th December 2019, between 10.00am and 4.00pm only.**
No further access will be available after this time.
- **Please note:**
 - There are no lifting or removal facilities available on site; the purchaser must arrange this. LSH employees / representatives will not be able to assist.
 - Items are sold in-situ - All disconnections and dismantling/removals are the responsibility of the purchaser.
 - Please note some items will require removal from the first floor.
 - Please ensure you bring the required tools and manpower and arrive on site in sufficient time to allow for the safe

disconnection, dismantling, removal and/or loading of your lots before the site closes.
- This is a PPE site. Safety shoes and hi vis must be worn to ensure site access.

- **Lambert Smith Hampton does not undertake packaging, label printing, postage, delivery or shipment of goods and the bidder must make his own arrangements to comply with the clearance terms**
- Clearance of all lots must be undertaken in accordance with Health & Safety at Work Regulations and, where necessary, Construction Design and Management Regulations 1994.
- **Risk Assessments and Method Statements (RAMS):** If you purchase a lot that requires RAMS to be completed please be aware that you will not be permitted access to site to commence collection of ANY of your lots until the required RAMS has been completed and reviewed by an LSH representative. If you need access to site during the collection period to review equipment for RAMS purposes, or have any further questions please contact Kevin Powell on kpowell@lsh.co.uk.
- Lambert Smith Hampton reserve the right to stop clearance if in their opinion, they believe it is being carried out in an unsafe manner or without the Method Statement and Risk Assessment.
- The purchaser should ensure that their contractors hold sufficient public liability insurance, copies of which should be made available to Lambert Smith Hampton if demanded.
- Any fluids remaining in any lots purchased MUST be removed from site in conformity with the Control of Substances Hazardous to Health (COSHH) Regulations.

CONDITIONS OF SALE

All lots will be sold subject to the Conditions of Sale as printed on the catalogue cover. Bidders are strongly advised to read them carefully.

TRANSFER OF LOTS:

Lambert Smith Hampton will only accept payment from and permit removal of lots purchased by the successful purchaser or their duly appointed agent.

OVERSEAS PURCHASERS:

Overseas purchasers must, on acceptance of offers, advise of their intentions to export their good immediately and notify our Sales Co-ordinator, Elaine Allan [eallan@lsh.co.uk]

Overseas purchasers will be required to provide details of :

- (a) Their passport(s)
- (b) One other method confirming their identity, ie drivers licence, name, address, UK agent (if any), telephone and fax numbers.
- (c) Full details of their national bank and their UK corresponding bank.
- (d) Details from their bank confirming method of payment, etc.

Please also ensure that:

- (e) Your country, or the country to which the items are destined, holds no import restrictions on the goods that you wish to purchase.
- (f) The country has no import licence restrictions or a restriction on currency allocation.
- (g) The country has no prolonged inspection procedure, which might cause excessive delay in allowing your goods to be imported.
- (h) You receive a fully descriptive invoice in order that you may arrange payment as soon as possible with our bank.
- (i) You employ a reputable freight-forwarding organisation. Please note that many of the machinery removal companies in this country are not necessarily freight forwarders. We will be pleased to advise accordingly.
- (j) You have read the Conditions of Sale.

Please Note:

- (a) We will not allow removal of any Lot from the Sale site until our Accounts Department has received notification from our bankers that your payment has been properly cleared in full. Monies must be transferred to ourselves within the time stated in the "Notice to Purchasers"
- (b) If there are any special arrangements that you wish to make with us, you must contact us at least three days before the Sale date.
- (c) Our terms regarding payment of VAT and subsequent refunds.

VAT on Goods Destined for Export:

All purchasers intending to export their purchases will be charged a deposit equal to that of the VAT due on each lot purchased and the Buyer's Premium.

In order to qualify for a refund, the goods must be exported in accordance with regulations under "Indirect Export" and valid evidence of export received by Lambert Smith Hampton within one month of the date of export. Where satisfactory evidence is not provided, goods and services will be subject to UK VAT at the standard rate and the deposit will not be refunded.

International Bank Charges: Please note LSH will look to recover charges incurred on the transfer of the VAT deposit refunded.

Please ensure that the cashier has been notified of your intentions to export prior to removal of goods.

The above information must be supplied in writing to our Sales Co-ordinator, Mrs Elaine Allan, Lambert Smith Hampton, First Floor, 2 Manor Court, Barnes Wallis Road, Fareham, PO15 5TH, on your official company notepaper and signed by the contact name quoted.

If you intend to export your purchases using your own transport (either by sea, rail or air), then VAT will be levied and refunded upon receipt of satisfactory documentation, supporting removal of the goods purchased.

Lambert Smith Hampton reserve the right to refuse to accept the bid of any bidder should they be unable to satisfy Lambert Smith Hampton on any of the above.

PAYMENT DETAILS

◆ Purchasers should note that **GOODS MAY ONLY BE REMOVED FROM SITE UPON RECEIPT OF PAYMENT IN FULL IN CLEARED FUNDS**

◆ For the avoidance of doubt, CLEARED FUNDS is:

Cash [see note 1]

Telegraphic Transfer / BACS [see note 2]

Credit / Debit cards / Cheques, Bankers Drafts CANNOT be accepted

PURCHASERS WHO MAKE OVER THE COUNTER PAYMENTS AT THE BANK WILL HAVE THEIR COLLECTION STALLED UNTIL THE BANK HAVE CONFIRMED IT IS A LEGITIMATE CASH PAYMENT.

(1) CASH	Lambert Smith Hampton (LSH) operates within the guidelines in respect of Money Laundering as set out in the Proceeds of Crime Act 2002. ◆ In this instance onsite cash payments will be restricted to £2,000.00
(2) Telegraphic Transfers / BACS payments	Purchasers who wish to make direct payments into our bank account can obtain bank details from the office following notification of successful bids. Please note timescales for payment, as follows ◆ Telegraphic payments : up to 24hrs ◆ BACS payments : 3 day Payments direct into our bank account will not be accepted by any other method. For the avoidance of doubt over the counter credits are not an acceptable method of payment and is in breach of Lambert Smith Hampton payment terms particularly those that relate to the Money Laundering Act 2017

MONEY LAUNDERING REGULATIONS

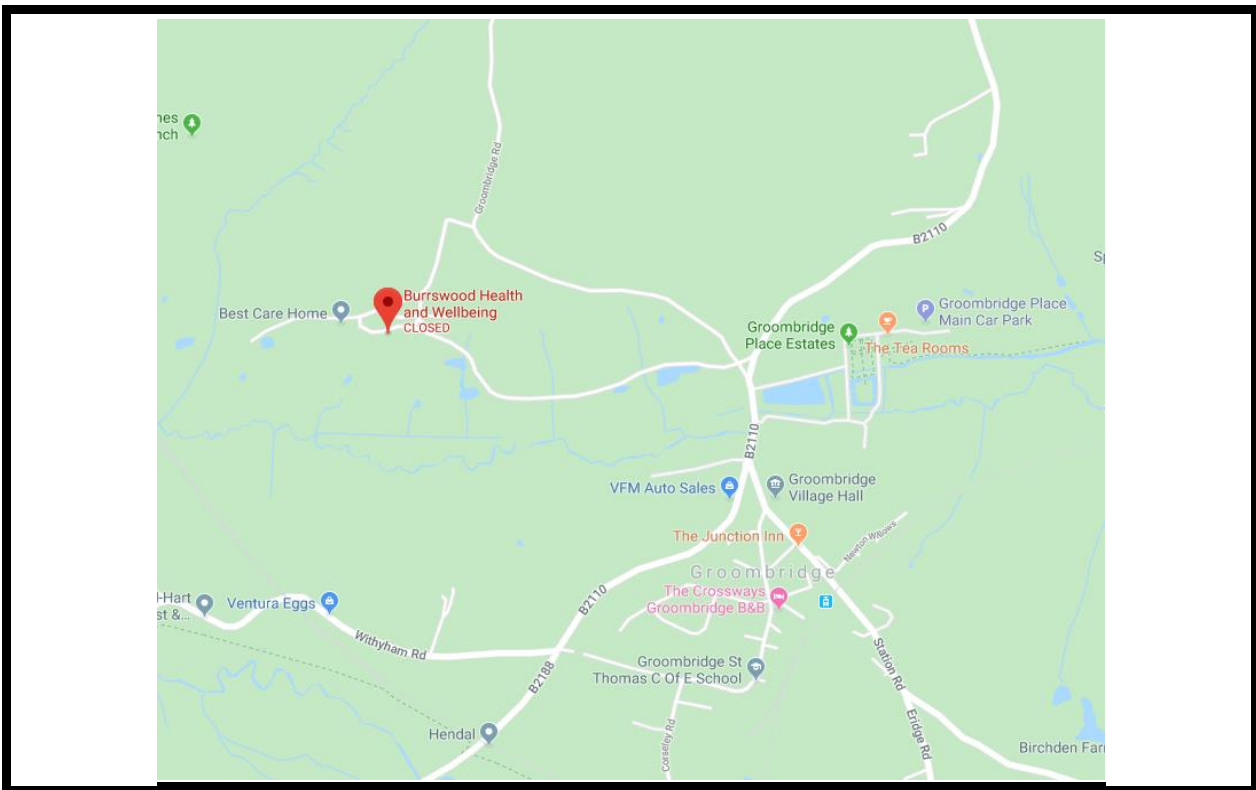
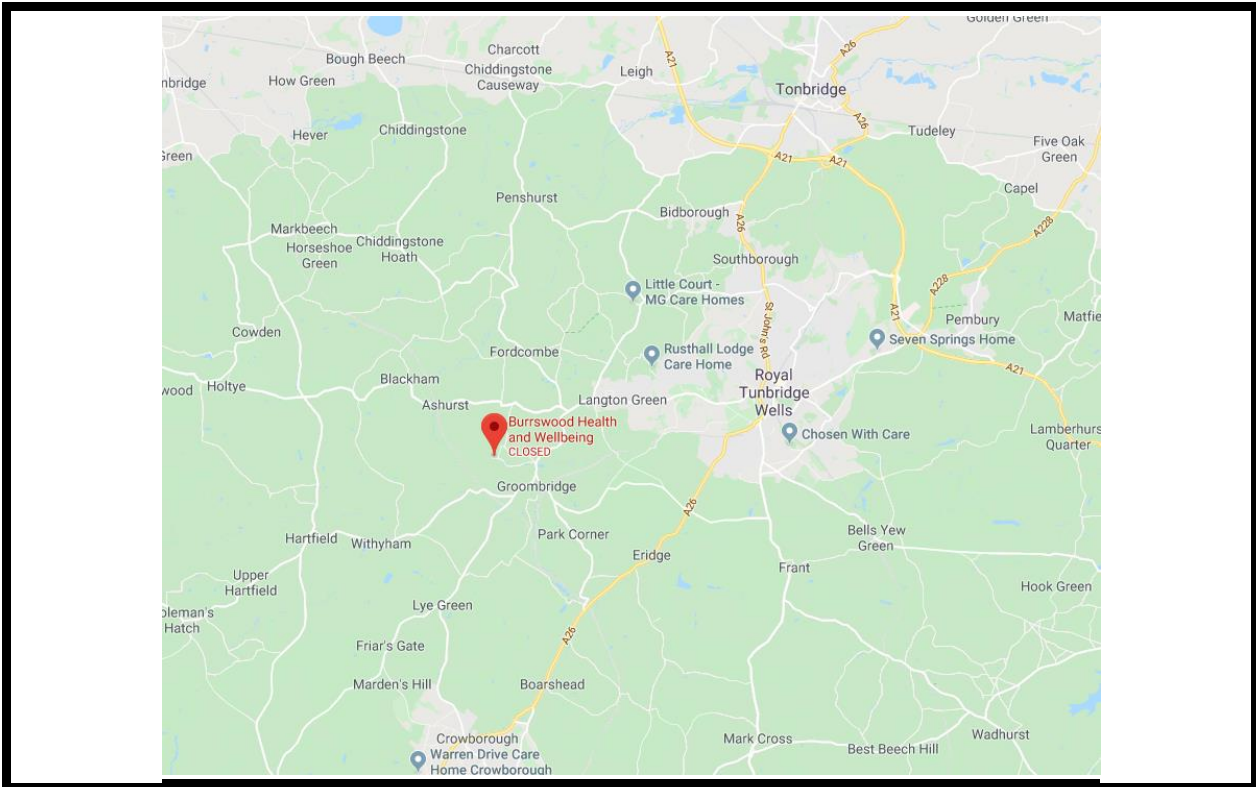
Services provided by Lambert Smith Hampton in relation to the sale of assets fall under the Proceeds of Crime Act 2002. Accordingly we have put in place policies and procedures which are designed to prevent, forestall and identify acts of money laundering.

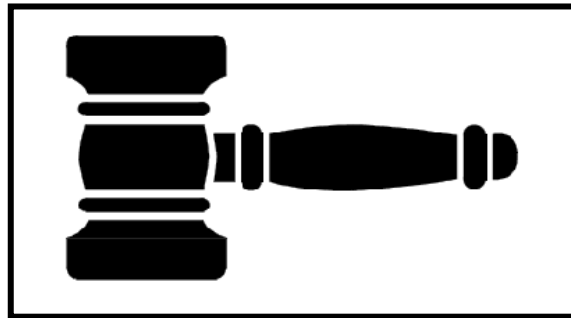
Lambert Smith Hampton will not accept transactions in cash which exceed £7,000 under any circumstances and Lambert Smith Hampton will take any action necessary to ensure that it does not contravene its obligations under the Money Laundering Regulations 2017. In the event that a purchaser entering into a business relationship with Lambert Smith Hampton, knowingly or unwittingly fails to comply with our policy Lambert Smith Hampton will have no choice than to treat this as a breach of the regulations. Where necessary ID will be sought by the company and consider a report to NCIS (National Criminal Intelligence Service)

Should you have any queries on the above, please contact our MBA Accounts Team on +44(0)2380 461643

THE DOROTHY KERIN TRUST

**The Dorothy Kerin Trust t/a Burrswood Health and Wellbeing,
Bird in Hand Street, Groombridge, Tunbridge Wells, Kent, TN3 9PY**





NOTICE

**ALL LOTS IN THIS
SALE ARE SUBJECT
TO A BUYERS
PREMIUM OF 16%
PLUS V.A.T AT THE
PREVAILING RATE**

IMPORTANT COLLECTION INFORMATION:

Lots to be removed from:

Monday 9th December to Friday 13th December 2019, between 10.00am and 4.00pm **only**.

No further access will be available after this time.

Please note:

There are no lifting or removal facilities available on site; the purchaser must arrange this. LSH employees / representatives will not be able to assist.

Items are sold in-situ - All disconnections and dismantling / removals are the responsibility of the purchaser.

Please note some items will require removal from the first floor.

Please ensure you bring the required tools and manpower and arrive on site in sufficient time to allow for the safe disconnection, dismantling, removal and/or loading of your lots before the site closes.

This is a PPE site. Safety shoes and hi vis must be worn to ensure site access.


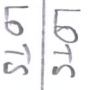
Lambert Smith Hampton does not undertake packaging, label printing, postage, delivery or shipment of goods and the bidder must make his own arrangements to comply with the clearance terms.

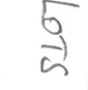
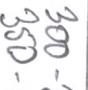
Please be reminded that we do not have the facility to accept debit or credit card payments (the details required when signing up are for name and address validation purposes only). Please refer to the "Payments Details" page for accepted methods of payment.

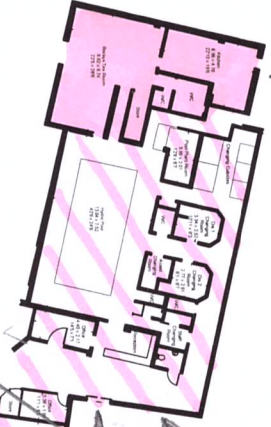
THE DOROTHY KERIN TRUST
Bidding Ends: THURSDAY 5TH DECEMBER 2019 from 1.00pm

Burrswood

Approximate Area (Entire Building) = 4,696 sq m / 50,547 sq ft


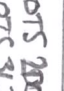
 LOTS 70-98
 LOTS 400-508


 LOTS 300-350 MEDICAL BLOCK
 350-400 HOUSE




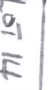
Upper Ground Floor
Ground Floor


ALCOHOL ENTRANCE

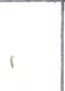
 LOTS 200-300
 LOTS 317-390

 LOTS 1613

 LOTS 109-188+99

 LOT 14

 LOTS 301-316

 LOTS 20 to 65

SINE PRICES & ISI AID

GROUND FLOOR

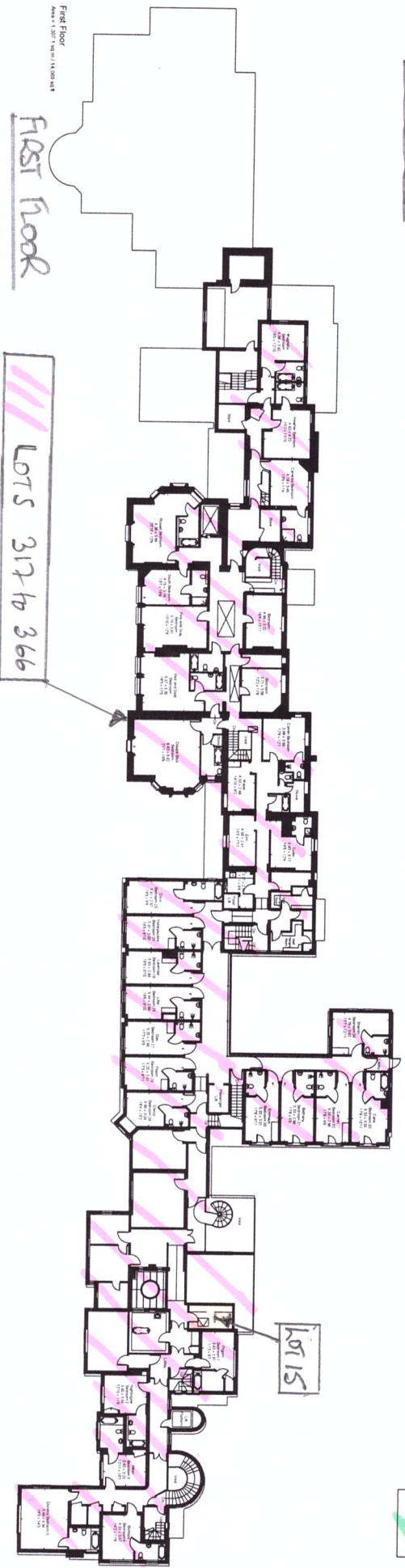
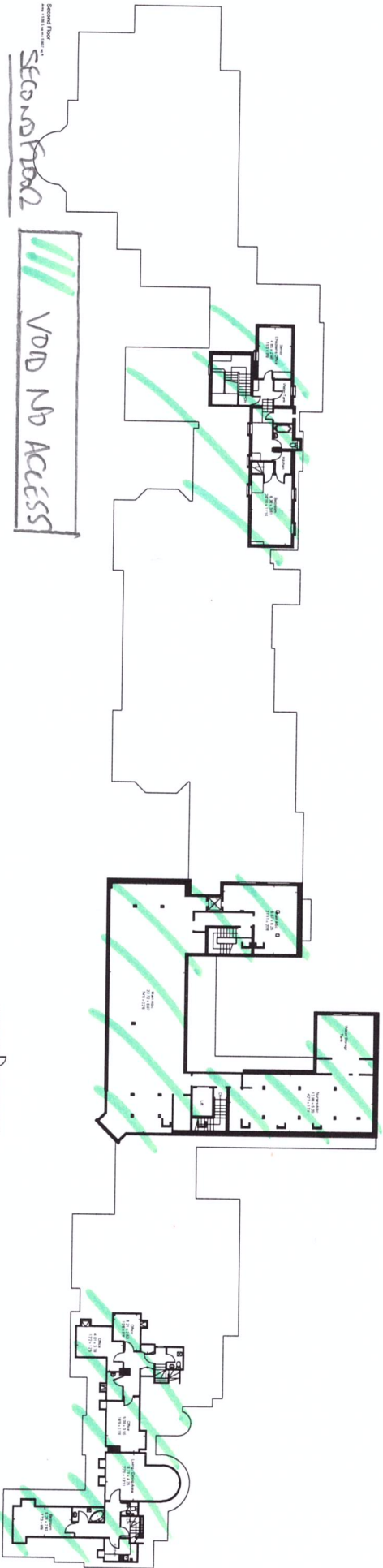
Ground Floor
Area: 1973 sq m / 21347 sq ft



BASEMENT

Burrswood

Approximate Area (Entire Building) = 4,696 sq m / 50,547 sq ft



Lot No.	Description
---------	-------------

1	Primus T1313 Dual Drum 2x13Kg Stacked Commercial Gas Tumble Dryer s/n BTD 002004NV 240v (2008) Gas heating 2x 19.5Kw type B22 **NB A work Method Statement and Risk Assessment must be reviewed and approved by the Auctioneer prior to any removal work commencing on this lot.
2	Domus DTP2-18G Stacked 18Kg Commercial Gas Tumble Dryer s/n 86757 230v Gas Power 24Kw **NB A work Method Statement and Risk Assessment must be reviewed and approved by the Auctioneer prior to any removal work commencing on this lot.
3	Domus DHS-10L 10Kg stainless steel commercial washing machine s/n 77763 (2003) c/w P&G professional power and chemical dispenser **NB A work Method Statement and Risk Assessment must be reviewed and approved by the Auctioneer prior to any removal work commencing on this lot.
4	Primus FS10 10Kg stainless steel commercial washing machine (2010) 9Kw s/n 10F01087ORE c/w P&G professional power and chemical distributor **NB A work Method Statement and Risk Assessment must be reviewed and approved by the Auctioneer prior to any removal work commencing on this lot.
5	Primus FS10 10Kg stainless steel commercial washing machine (2005) 9Kw s/n 239/04697 c/w P&G professional power and chemical distributor **NB A work Method Statement and Risk Assessment must be reviewed and approved by the Auctioneer prior to any removal work commencing on this lot.
6	Primus FS10 10Kg stainless steel commercial washing machine (2006) 9Kw s/n 10F005994 c/w P&G professional power and chemical distributor **NB A work Method Statement and Risk Assessment must be reviewed and approved by the Auctioneer prior to any removal work commencing on this lot.
7	Electrolux IB32310 commercial rotary iron s/n 50200017 (2005) 240v
8	Contents of Laundry Room to include five mobile linen trollies, three mobile linen bins, one mobile two tier trolley, tyen plastic washing baskets, two ceiling mounted height adjustable drying racks, clothes rail, ironing board, two 'A' frame drying racks, various mopheads and a quantity of bed sheets, towels/linen etc., as lotted (excludes dryers, washers & rotary iron)
9	Contents of the Linen Room to include linen, pillows, quilts, bedsheets, robes, towels etc., as lotted
10	Contents of office by laundry room to include wave front desk, two pedestals, swivel & tilt chair, four drawer filing cabinet, reception phone, circular meeting table & four chairs, book case, uplighter, lamp & Rexel paper shredder
11	Arjo keyhole shape assisted bath with shower Prod No AR52311-GB batch No SE214840 c/w Arjo Hydraulic Hoist s/n 218100-0690343213 NB: This item has no record of Thorough Examination. The purchaser must ensure a Thorough Examination is carried out by a competent person prior to first use. The purchaser will be required to sign an undertaking confirming their agreement. *A work Method Statement and Risk Assessment must be reviewed and approved by the Auctioneer prior to any removal work commencing on this lot.

THE DOROTHY KERIN TRUST
Bidding Ends: THURSDAY 5TH DECEMBER 2019 from 1.00pm

Lot No.	Description
---------	-------------

12	Chiltern CI200 fixed electric hoist model Wispa OH 200LT s/n 200-000773 Asset ID 00381 c/w fixed bar approx 3m 2x2m cross section NB: This item has no record of Thorough Examination. The purchaser must ensure a Thorough Examination is carried out by a competent person prior to first use. The purchaser will be required to sign an undertaking confirming their agreement. *A work Method Statement and Risk Assessment must be reviewed and approved by the Auctioneer prior to any removal work commencing on this lot.
13	Arjo Parker 420 assisted bath with shower 410kg capacity model ALXXXX-GB Prod No AL11510-GB s/n 0901001273 240v **NB A work Method Statement and Risk Assessment must be reviewed and approved by the Auctioneer prior to any removal work commencing on this lot.
14	Stanbridge Compact C3 HD superior multi utensil disinfection washer s/n 10830
15	Stanbridge Compact C3 HD superior multi utensil disinfection washer s/n 10841 *RAMS
20	Rational CD Combi Dampfer gas oven c/w stand **NB A work Method Statement and Risk Assessment must be reviewed and approved by the Auctioneer prior to any removal work commencing on this lot.
21	Rational Self Cooking Centre Gas Oven c/w stand **NB A work Method Statement and Risk Assessment must be reviewed and approved by the Auctioneer prior to any removal work commencing on this lot.
22	Falcon 900 SX series G9512 Gas Salamander Grill mounted on stand **NB A work Method Statement and Risk Assessment must be reviewed and approved by the Auctioneer prior to any removal work commencing on this lot.
23	Mareno four section mobile stainless steel gas hob and oven **NB A work Method Statement and Risk Assessment must be reviewed and approved by the Auctioneer prior to any removal work commencing on this lot.
24	Mareno four section mobile stainless steel gas hob and oven **NB A work Method Statement and Risk Assessment must be reviewed and approved by the Auctioneer prior to any removal work commencing on this lot.
25	Mareno two section mobile stainless steel gas hob and oven with hot plate **NB A work Method Statement and Risk Assessment must be reviewed and approved by the Auctioneer prior to any removal work commencing on this lot.
26	Two Falcon stainless steel gas pizza ovens (joined) c/w stand **NB A work Method Statement and Risk Assessment must be reviewed and approved by the Auctioneer prior to any removal work commencing on this lot.
27	Crypto Peerless EM20S mixer (2000) s/n 15032 0009 005 240v and five paddle attachments
28	Crypto Peerless Mixer (no attachments or bowl)
29	Hobart A120 mixer s/n 97110761 240v (no mixing paddles)
30	Panasonic Pro11 NE 1880 stainless steel commercial microwave 240v
31	Unnamed mobile stainless steel three door undercounter chiller with worktop
32	Foster Surf Navigation mobile stainless steel blast chiller/freezer
33	Mondial Elite upright stainless steel chiller
34	Foster Gastronorm Supra +85°/+87° upright stainless steel warmer cabinet

THE DOROTHY KERIN TRUST
Bidding Ends: THURSDAY 5TH DECEMBER 2019 from 1.00pm

Lot No.	Description
---------	-------------

35	Foster Gastronorm Supra +1°/+4° two door mobile stainless steel under counter chiller
36	Foster Gastronorm Supra +1°/+4° two door mobile stainless steel under counter chiller
37	Polar G591 stainless steel mobile upright chiller 240v s/n G591 482085
38	AEG Öko-Arctis chest fridge freezer
39	Foster FSL800L mobile 2-door stainless steel upright freezer s/n E5263780
40	Electrolux NHT8G stainless steel commercial dishwasher (2016) s/n 61010027 c/w L shaped pre-wash station with 5 tray holder IMC 904X food waste disposal unit wash station with power hose and drying station with 10 trays **NB A work Method Statement and Risk Assessment must be reviewed and approved by the Auctioneer prior to any removal work commencing on this lot.
41	Stainless steel sink/wash station 2300mm x 660mm
42	Two stainless steel tray units
43	Twin shelf stainless steel prep bench 1500mm x 600mm
44	Stainless Steel sink/wash station 1200mm x 660mm
45	Stainless Steel 2 shelf prep bench with drawer 1800mm x 660mm
46	Stainless Steel double sink wash station 2400mm x 700mm c/w IMC 904X waste disposal unit
47	Stainless Steel workstation 1500mm x 1000mm
48	Two Tier stainless steel was sink station 1100mm x 660mm
49	Two shelved stainless steel prep table 600mm x 400mm
50	Three 4 tier mobile catering shelf units Length 880mm x width 400mm x Height 1670mm
51	Three 4 tier Catering Shelf Units Length 1360mm x width 400mm x height 1900mm
52	12 tier mobile tray storage unit & a 24 tier mobile tray storage unit
53	Four mobile plastic dry food storage bins
54	4 tier mobile catering unit and contents to include bread baskets, stainless steel serving trays, bowls, cups, plates and serving dishes
55	4 tier mobile catering unit and contents to include stainless steel teapots, hot water jugs/thermos's & dessert bowls
56	mobile tray unit and contents to include tea pots, cafetier & milk jugs
57	4 tier catering unit and contents to include cutlery, teacups & saucers, stainless steel tea pots & milk jugs
58	6 tier mobile catering unit & contents to include cake dishes, bowls, plates, tea cups & wooden trays
59	4 tier mobile catering unit c/w 10 section mobile tray unit & contents to include bone china cake displays, cups & saucers, stainless steel serving bowls & kitchen uniforms
60	4 tier catering unit and contents to include pots & pans and 2 stainless steel shelves and contents including plastic jugs, mixers & cheese graters as lotted
61	Six stainless steel shelves 2 x 1750mm x 300mm & 4 x 850mm x 300mm (excludes contents)

THE DOROTHY KERIN TRUST
Bidding Ends: THURSDAY 5TH DECEMBER 2019 from 1.00pm

Lot No.	Description
---------	-------------

62	Four cling film dispensors
63	Weighstation F178 electronic platform scale s/n 20111109183
64	Instanta CPF4100 twin hot water dispenser, Dairy Crest chilled milk dispenser and a Kenco Filter coffee machine
65	Rubbermaid 18 section mobile tray storage trolley
70	Expobar Markus twin bean to cup coffee machine model No MIC2GR c/w San Rimo SR50 ELON grinder
71	Instanta 1500 stainless Steel hot water boiler
72	Polar CD613 upright freezer s/n 8037263
73	Apollo AUR400 upright chiller s/n 313516
74	Polar CD080 stainless steel undercounter freezer s/n 6074089
75	Polar CD080 stainless steel undercounter freezer s/n 6053156
76	Stainless Steel 2 door prep counter 1200mm x 650mm, stainless steel prep table 1500mm x 660mm, stainless steel prep table 900mm x 660mm c/w contents to include salt & pepper pots, plates, saucers, dishes, cutlery etc., as lotted
77	Lincat GW1200 refrigerated counter top display bar
78	Buffalo L555-502 Double contact Panini grill
79	Lincat Electric stainless steel 4 hob oven **NB A work Method Statement and Risk Assessment must be reviewed and approved by the Auctioneer prior to any removal work commencing on this lot.
80	Lincat electric Bain Marie & Oven **NB A work Method Statement and Risk Assessment must be reviewed and approved by the Auctioneer prior to any removal work commencing on this lot.
81	Samsung stainless steel 1100W microwave oven model CN1089 (2016)
83	Miele Professional G7856 dishwasher c/w stainless steel stand
84	Blizzard glass fronted undercounter chiller
85	Alacer touch screen EPOS system c/w Epson TM-T 70II receipt printer & cash drawer
86	Moffat mobile plate warmer
86A	Moffat mobile plate warmer
87	Mobile three tier trolley
88	Bosch FD9112 chest freezer s/n 301149009312
89	Indesit Twilight upright chiller
90	Four green mesh top outdoor tables 1070mm dia eleven plastic stacking garden chairs
91	Metal framed table 1220mm dia with glass top
92	Two stainless steel framed outdoor tables 690mm x 690mm c/w two matching chairs
93	Two cast iron base wood top tables 700mm x 700mm
94	Wood framed childs high chair and a plastic framed childs high chair
95	Rio S68 glass top ice cream freezer display unit s/n 333640500000323
96	Two plastic Vitra style chairs
97	Ten 700mm x 700mm single pedestal dining tables c/w 18 wooden dining chairs
98	Ten 700mm x 700mm single pedestal dining tables c/w 18 wooden dining chairs

THE DOROTHY KERIN TRUST
Bidding Ends: THURSDAY 5TH DECEMBER 2019 from 1.00pm

Lot No.	Description
---------	-------------

99	Contents of kitchen to include Mach stainless steel commercial dishwasher, stainless steel sink unit & drainer 1800mm x 660mm, 2 stainless steel shelves 1800mm x 300mm, Miele fridge freezer, Instanta 1500 stainless steel hot water boiler, Panasonic 800w microwave, cling film dispenser, Igenix IG3204 stainless steel 4 slice toaster, kettle, Buffalo G108 coffee percolator, stainless steel 3 door wallmounted cabinet 1500mm x 300mm x 600mm, Russell Hobbs 9954 hotplate, Salton FU84 hotplate, 2 trolleys & a Red One insectocutor (excludes extraction canopy oven & hob)
100	Seating Matters Monaco Riser electric reclining chair s/n M051714682 (2017) Max weight 300Kg seating width 380mm
101	Seating Matters Monaco Riser electric reclining chair s/n M051714883 (2017) Max weight 300Kg seating width 380mm
102	Seating Matters Monaco Riser electric reclining chair s/n M051714884 (2017) Max weight 300Kg seating width 380mm
103	Seating Matters Monaco Riser electric reclining chair s/n M051714885 (2017) Max weight 300Kg seating width 450mm
104	Seating Matters Monaco Riser electric reclining chair s/n M051714886 (2017) Max weight 300Kg seating width 450mm
105	Repose Seminar HY2207-55 electric reclining chair lift capacity 160Kg s/n 337612 (2016)
106	Repose Seminar HY2207-55 electric reclining chair lift capacity 160Kg s/n 258774 (2014) *Note No power lead
107	Alto Shaam Halo Heat Low Temperature Holding Cabinet model 1000-S s/n 122672 0600 240v 1000 watts
108	Moffat 3V3 mobile bain marie and hot cabinet s/n 66290 240v
109	Oxford Elevate 2000 stand aid 200Kg s/n 1004L0858190
110	Arjo Huntleigh Sara Steady transfer aid model NTB2000 s/n NTB-01202 182Kg
111	Arjo model 218181 patient lift 150Kg s/n 21818551115
112	Arjo Minstrel mobile patient lift with scale SWL 190Kg Art No HMA0007-UK s/n MS1004a152
113	Arjo Tempo KM001 lifting hoist s/n GB3800460439T *suitable for spares and repairs
114	Weymed 590/BMI Digital Class III Chair scales model BMI-200 max 200Kg s/n BMI-C0043
115	Invacare REA Azalea Assist Tilt in Space wheelchair s/n 1310200106 (2013)
116	Invacare REA Azalea Assist Tilt in Space wheelchair s/n 15102000877 (2015)
117	Invacare REA Azalea Assist Tilt in Space wheelchair s/n 020500860675 (2005)
118	Invacare Action 3 NG Comfort wheelchair s/n 13H05000369 (2013)
119	Invacare Action S wheelchair s/n 050918355917 (2009)
120	Chiltern Invadex TransAqua shower & toileting/Commode chair s/n 353090
121	Invacare Action 2 NG Comfort wheelchair s/n 13FM0014 (2013)
122	Invacare Ben NGHD TR 20x18 wheelchair s/n 16CFM0070844 (2016)
123	Invacare Action 3 wheelchair s/n 050507550906 (2005)
124	Karma wheelchair s/n 902849 (2009)

THE DOROTHY KERIN TRUST
Bidding Ends: THURSDAY 5TH DECEMBER 2019 from 1.00pm

Lot No.	Description
---------	-------------

125	Excel Vanos wheelchair s/n 1277-00000235 (2010)
126	Enigma wheelchair s/n X16080730
127	Days Escape Lite wheelchair model 338-S s/n KW010456 (2011)
128	Dash NSV Ranger 9 TRL wheelchair s/n 017343 (2006)
129	Greencare wheelchair s/n G52 0400182
130	SZ-Aid-APT mobile commode s/n 00279361
131	Two SZ-Aid-APT mobile commodes s/n 00279519 & 01159941
132	James Spencer mobile commode
133	Three Roma Medical mobile commodes model 3190A/4BC (2015)
134	Three Invacare mobile commodes
135	Chiltern Invadex mobile commode s/n 0010179
136	Invacane mobile commode
137	Days model 240L Tri Wheel walker (2008)
138	Two Coopers mobile walking aids Lot No 10C1507010 Code 10910C
139	Coopers mobile walking aid Lot No AJ01140280 Code 10901C
140	Invacare Dolomite AB Rollator
141	Three VCS height adjustable shower seats
142	Three VCS height adjustable shower seats
143	Three Days height adjustable shower seats
144	Four Days height adjustable shower seats
145	Two SZ-Aid-APT height adjustable walking frames s/n 01427651 & 01427505
146	Two SZ-Aid-APT height adjustable walking frames s/n 01037833 & 00386324
147	Two height adjustable walking frames
148	Nine various height adjustable shower chairs
149	Six various height adjustable commodes
150	Three Coopers 10901C three wheeled walker with bag gun metal gray (boxed)
151	NRS Dovedale Commode Range adjustable height commode model F18864 (boxed)
152	Four Coopers 10907C rolling walkers/rollator gun metal gray (boxed)
153	Five height adjustable commodes
154	Four various footstools & a low bentwood chair
155	Four Cooper height adjustable mobile walking frames (unused)
156	Four Cooper height adjustable mobile walking frames
157	Six various height adjustable mobile walking frames
158	Six various height adjustable mobile walking frames
159	Two height adjustable mobile walking frames with arm rests
160	Two height adjustable mobile walking frames with arm rests
161	Two height adjustable shower chairs
162	Two NRS slatted bath boards (boxed)
163	Four Cooper 7703C height adjustable aluminium straight neck support sticks (unused)
164	Five Cooper 7703C height adjustable aluminium straight neck support sticks (unused)

THE DOROTHY KERIN TRUST
Bidding Ends: THURSDAY 5TH DECEMBER 2019 from 1.00pm

Lot No.	Description
---------	-------------

165	Three Pairs Cooper 7703C height adjustable aluminium straight neck support sticks (packaged)
166	Four pairs Cooper 7703C height adjustable aluminium straight neck support sticks (packaged)
167	Two Coopers 7808C Tetrapod small base walking aids
168	Three Coopers 7726C Adjustable Fisher adult (Right Hand) walking sticks
169	Three Coopers 7726C Adjustable Fisher adult (Right Hand) walking sticks
170	Seven Coopers 7727C adjustable Fischer medium (left Hand) walking sticks
171	Six Coopers 7727C adjustable Fischer medium (left Hand) walking sticks
172	Twelve Cloth Bentwood Light Oag Veneer Meeting Room Chairs
173	Five Cloth Bentwood Light Oag Veneer Meeting Room Chairs
174	Fifteen Cloth Bentwood Light Oag Veneer Meeting Room Chairs
175	Two metal frame light oak veneer semi circular meeting tables 1500mm 750mm and two metal frame light oak veneer meeting tables 750mm x 750mm
176	Six metal framed light oak veneer meeting room tables 1200mm x 750mm
177	Unicol mobile TV stand c/w Sony Trinitron KV-X2982u 29" colour monitor
178	Five Talley Quattro Acute Medical air mattresses c/w pump (faulty suitable for spares and repairs)
179	Five Talley Quattro Acute Medical air mattresses c/w pump (faulty suitable for spares and repairs)
180	Seven Aura medical air pillows c/w pumps (faulty suitable for spares and repairs)
181	Two bins & contents to include various walking sticks, crutches & walking aids as lotted
182	Days 091356336/105B 100 series lightweight rollator
183	Cefndy batch no. 270705X148 extra wide commode seating width 700mm
184	Unnamed height adjustable mobile drip stand
185	Two Sidhil Care height adjustable mobile drip stands
186	Two unnamed height adjustable mobile drip stands
187	Biolamps mobile Thermal Mineral Medical Device Biolamp deluxe infrared heatlamp
188	Seating Matters Stabilus bloc'o'lift hydraulic seat s/n 434275 0280N
189	Contents of understairs cupboard to include various size hoist slings Heel Pro protective head guards, Little Anne training manauquin, slide sheets & spinal board as lotted
190	Two MSS Propad Dura Covers medical mattress overlays
191	Two MSS Propad Dura Covers medical mattress overlays
192	Steiss Global SXM100 static medium risk medical mattress 2000x900x150mm
193	Steiss Global SXM100 static medium risk medical mattress 2000x900x150mm
194	Care Base medical mattress
195	Bock Multisoft medical mattress
196	Bock Matrix medical mattress
197	Bock Mat 20BE medical mattress
198	Sidhil DeVilbiss Healthcare Drive Mat 20BE pressure care medical mattress (sealed) 1990x900x150mm

THE DOROTHY KERIN TRUST
Bidding Ends: THURSDAY 5TH DECEMBER 2019 from 1.00pm

Lot No.	Description
---------	-------------

199	Sidhil DeVilbiss Healthcare Drive Mat 20BE pressure care medical mattress (sealed) 1990x900x150mm
200	EMS Medi-Link system to include control module model 70 s/n 66354, suction unit model 69 s/n 57621, Interferential unit model 71 s/n 65848 c/w associated probes, suction leads & mobile trolley plus EMS Medi-Link system & trolley suitable for spares and repairs.
201	LSU Laerdal suction unit s/n 78371189308
202	LSU Laerdal suction unit s/n 78470854647
203	Schiller Fred Easy Defibrillator s/n 058997013109
204	Philips Respironics Innospine Deluxe Nebuliser Ref No 1112279 Lot No 1506-CNWL s/n 029102
205	Philips Respironics Innospine Porta-neb portable Nebuliser s/n 13100030017
206	Elettromedicali Suction Professional 3A Aspirator
207	Sterizone 2200 s/n W01228/09
208	Roche CoaguChek XS Plus s/n 04513126001 (05) c/w handheld base unit
209	Welch Allyn CP100 Interpretive ECG monitor unit Ref CDIA s/n 10006753
210	HO Medics cool mist ultrasonic humidifier model HUM-CMS04-EU s/n 1203000913
211	Medical basket trolley & contents to include Seca Scales, Patterson electrical nerve stimulation device, two pupil gauges, single & double stethoscope, three pulse oximeters
212	Caldura medical mini fridge
213	RTD-16A Ultraviolet Sterilizer 16L hot facial towel cabinet
213A	TUV Coolzone locable drugs chiller with digital temp display model CZ5112 class N s/n 302599/0702
214	Two Behringer Truth B2031A active studio monitor speakers c/w Skytec SMW 15 passive 15" subwoofer
214A	Tascam CC222 SL MkII CD Recorder & Cassette Recorder with MP3 Compact Re Writable CD wireless remote control & Allan & Heath PL10 Rotary Fader Plate Module Compact Mixer Interface built into purpose built console
215	Two Behringer Truth B2031A active studio monitor speakers c/w Skytec SMW 15 passive 15" subwoofer
216	Bristol Maid Lockable Drugs Cabinet H310mm x D150mm x L400mm with key
217	Bristol Maid Lockable Drugs Cabinet H310mm x D150mm x L400mm with key
218	Two Bristol Maid Lockable Drugs Cabinet H310mm x D150mm x L400mm with keys
219	Four Bristol Maid Lockable Drugs Cabinet H310mm x D150mm x L400mm with keys
220	Three Bristol Maid Lockable Drugs Cabinet H310mm x D150mm x L400mm no keys
221	Bristol Maid Lockable Drugs Cabinet H400mm x D200mm x L300mm with key
222	Two Bristol Maid Lockable Drugs Cabinet H400mm x D200mm x L300mm with keys
223	Two Bristol Maid Lockable Drugs Cabinet H400mm x D200mm x L300mm with keys
224	Two Bristol Maid Lockable Drugs Cabinet H400mm x D200mm x L300mm with keys
225	Three Bristol Maid Lockable Drugs Cabinet H400mm x D200mm x L300mm no keys
226	Three Bristol Maid Lockable Drugs Cabinet H400mm x D200mm x L300mm no keys
227	Franke Flair bean to cup coffee machine type 654 240v s/n F2M HD CE2

THE DOROTHY KERIN TRUST
Bidding Ends: THURSDAY 5TH DECEMBER 2019 from 1.00pm

Lot No.	Description
---------	-------------

228	Buffalo CB432 4 slice toasater 240v s/n 341400026
229	TSE stainless steel multi pot hob top hot water kettle
230	TSE stainless steel multi pot hob top hot water kettle
231	William Page stainless steel hob top hot water kettle
232	Baroc 444448529 20L stainless steel electric hot water boiler
233	Buffalo CC191 20 litre stainless steel hot water boiler
234	Marco A0620 20 litre stainless steel hot water boiler s/n 65030836845
235	Buffalo G108 pour and serve filter coffee machine (no jugs)
236	Dualit DSK1B 10 litre soup kettle SUK No 71110 s/n 2017-41
237	Crypto Peerless CD8 catering potato peeler s/n 191 43 9950 010 (1999)
238	Lincat CT1-A001 conveyor belt toaster 240v s/n 28041646
239	Technico 2-G Stresa 250 gravity feed meat slicer
240	Counter balance scales c/w various weights
241	Three various thermos jugs as lotted
242	Ten Kinox Connoisserve 36 oz insulated teapots (boxed)
243	Ten Kinox Connoisserve 36 oz insulated teapots (boxed)
244	Ten Kinox Connoisserve 36 oz insulated teapots (boxed)
245	Twelve Olynpia Cosmos stainless steel Beverage pots (boxed) four Meville 12 oz stainless steel teapots (boxed) Six Professional Range stainless steel milk jugs 10 oz (boxed)
246	Two Sunnex 20 oz stainless steel coffee pots (boxed) three Sunnex insulated 21 oz stainless steel beverage servers (boxed) Four K745 16 oz stainless steel coffee pots (boxed) five Sunnex 5 oz cream jugs
247	Twenty stainless steel 16" serving serving trays
248	Eighteen Arcoroc Degustation 25cl brandy glasses, twenty four Arcoroc Sovoie 17cl wine glasses, Twelve small glass water jugs, six medium glass water jugs, twelve drinking glasses,
249	Twelve salt shakers & Twelve pepper shakers
250	Dutch cooking pot
251	Eight Knightsbridge BT14 230v IP44 14w trade LED luminaire ceiling lights (boxed)
252	Sebo BS36 comfort vacuum cleaner
253	Sebo BS36 comfort vacuum cleaner
254	Two Sebo BS36 comfort vacuum cleaners
255	Rotowash Professional upright floor/carpet cleaner
256	Rotowash Professional upright floor/carpet cleaner
257	Rotowash Professional upright floor/carpet cleaner
258	Casteicovati steam carpet cleaner
259	Rubbermaid 6183 mobile cleaning/Janitor trolley c/w accessories as lotted
260	Rubbermaid 6183 mobile cleaning/Janitor trolley c/w accessories as lotted
261	Rubbermaid 6183 mobile cleaning/Janitor trolley c/w accessories as lotted
262	Two Rubbermaid 6183 mobile cleaning/Janitor trolleys c/w accessories as lotted
263	Two 2 tier mobile wood framed serving trollies
264	Two 2 tier mobile wood framed serving trollies

THE DOROTHY KERIN TRUST
Bidding Ends: THURSDAY 5TH DECEMBER 2019 from 1.00pm

Lot No.	Description
---------	-------------

265	Sunflower 5 drawer metal framed mobile trolley
266	Forty metal framed plastic folding chairs c/w mobile storage unit
267	Forty metal framed plastic folding chairs c/w mobile storage unit
268	Mobile lockable drug dispensing cabinet with key
269	Four shop displays & contents of to include books, gift wrap, note books, thank you cards, 2019 diaries etc as lotted
270	One mobile & two wall mounted CD display stands & contents of approx 50 sealed CD's as lotted
271	Five shop displays and contents to include large quantity of books as lotted
272	Two 4 drawer card display stands & contents of large quantity of of various cards to include birthday, sympathy, retirement, new baby, christening, first communion, thinking of you, new home, anniversary, baptism etc., as lotted
273	Three tables and contents to include books, shop displays, candles, cards, advent calendars, decorations, charms, broaches, tea towels, toys, necklaces, bracelets etc., as lotted
274	Four mobile revolving card display stands c/w contents of various cards as lotted
275	Four mobile revolving card display stands three clear plastic displays, metal framed display c/w contents of various cards etc as lotted
276	Alacer touch screen EPOS system c/w Epson TM-T 70II receipt printer & cash drawer
277	Three matching side tables as lotted
278	Two matching arm chairs in turquoise cloth
279	Two matching wood framed dining chairs with cloth pad seats
280	Two cloth seat sofa & two matching arm chairs
281	Various crockery as lotted
282	Two newspaper stands, book end stand & book stand
283	Newspaper stand
284	Two coffee tables, two small drop leaf tables & a three tier table
285	Single pedestal 1500mm diameter dining table
286	Claw legged 650mm side table
287	Ornate carved single pedestal 1200mm diameter dining table
288	Carved wood lamp table
289	Single pedestal high lamp table
290	Kemble upright piano c/w piano stool
291	Floral cloth 3 seat sofa & matching armchair
292	Two seat cloth sofa
293	Quantity of books, jigsaws & games as lotted
294	Seven various side tables & shades
295	Two brass side lamps & shades
295A	Two Side lamps & shades
295B	Three matching glass lamps & shades
295C	Two matching glass lamps & shades
295D	Two matching glass lamps & shades
296	Two brass standard lamps

THE DOROTHY KERIN TRUST
Bidding Ends: THURSDAY 5TH DECEMBER 2019 from 1.00pm

Lot No.	Description
---------	-------------

297	Side lamp & shade
298	Side lamp & shade
299	Two matching cut glass vases
300	Church Lectern, two church statues, wooden cross/crucifixion, brass plate & small table/stand
301	Contents of room Daisy to include three drawer vanity table and chair, three drawer mobile pedestal wall mounted Toshiba 19" TV with remote height adjustable bedside food tray (excludes bed)
301A	Belluno height adjustable wooden framed mobile bed (April 2004) SWL 170Kg 240V s/n 901121/001 C/W Drive MAT20BE Geltex single medical mattress *(beds last service date 22/5/18)
302	Contents of room to include three seater sofa, two high back arm chairs, light oak veneer side table (not including fire place)
303	Contents of room Sunflower to include three drawer vanity table and chair, one drawer bedside cabinet, wall mounted Toshiba 19" TV with remote, high back armchair c/w foot stool, height adjustable bedside food tray, kettle and phone (excludes bed)
303A	Belluno height adjustable wooden framed mobile bed (Dec 1999) SWL 250Kg 240V s/n 9401725-024 c/w Halo Multisoft medical single mattress *(beds last service date 22/5/18)
304	Contents of room Poppy to include three drawer vanity table and chair, mobile bedside lockable cabinet (no key), wall mounted Toshiba 19" TV with remote, high back armchair, height adjustable bedside food tray, kettle, bedside lamp and phone (excludes bed)
304A	Belluno height adjustable wooden framed mobile bed (June 2000) SWL 250Kg 240V s/n 901441-001 c/w Care Base medical single mattress *(beds last service date 22/5/18)
305	Contents of room Acorn to include three drawer vanity table and chair, bedside lockable cabinet, wall mounted Toshiba 19" TV with remote, high back armchair, wooden bag stand, kettle, alarm clock and phone (excludes bed)
305A	Belluno height adjustable wooden framed mobile bed (Sept 2000) SWL 250Kg 240V s/n 902117/001 *(beds last service date 22/5/18)
306	Contents of Robinia treatment room to include Silverfox electric height adjustable massage table model C-003D control box 240v, side table & mobile three tier trolley
307	Contents of office to include three drawer desk chair, mobile five drawer trolley, phone, fan, lamp and two alarm clocks (not including IT)
308	Contents of room Chestnut to include three drawer vanity table, wardrobe, two bedside cabinets, two height adjustable bedside food trays, two high back arm chairs, foot stool, phone & kettle (excludes beds)
308A	Belluno height adjustable wooden framed mobile bed (Aug 2000) SWL 250Kg 240V s/n 902115/001 c/w Halo Multisoft medical single mattress *(beds last service date 22/5/18)

THE DOROTHY KERIN TRUST
Bidding Ends: THURSDAY 5TH DECEMBER 2019 from 1.00pm

Lot No.	Description
---------	-------------

308B	Belluno height adjustable wooden framed mobile bed (Aug 2002) SWL 200Kg 240V s/n L000171-155 c/w Halo Multisoft medical single mattress *(beds last service date 22/5/18)
309	Contents of room Italian to include four drawer bed chest, lockable bedside cabinet (no key) high back arm chair, height adjustable bedside food tray, foot stool, chair, kettle, bedside lamp, alarm clock & Toshiba 19" TV no remote (excludes bed)
309A	Belluno height adjustable wooden framed mobile bed (Sept 2000) SWL 250Kg 240V s/n 902117/001 *(beds last service date 22/5/18)
310	Contents of room Wisteria to include four drawer bedside cabinet, lockable bedside cabinet (no key), high back arm chair, Sidhil hydraulic height adjustable bedside tray, wall mounted Toshiba 19" TV with remote, phone light, kettle (excludes bed & hoist)
310A	Belluno height adjustable wooden framed mobile bed (March 2008) SWL 170Kg 240V s/n 9802787-007 *(beds last service date 22/5/18)
310B	Chiltern CI200 fixed electric hoist model Wispa OH 200LT s/n 200-000765 Asset ID 00370 test weight 190Kg (last tested 12/07/18) c/w fixed bar approx 4m NB: This item has no record of Thorough Examination. The purchaser must ensure a Thorough Examination is carried out by a competent person prior to first use. The purchaser will be required to sign an undertaking confirming their agreement. *A work Method Statement and Risk Assessment must be reviewed and approved by the Auctioneer prior to any removal work commencing on this lot.
311	Contents of room Willow to include three drawer bed chest, lockable bedside cabinet (no key), high back arm chair, height adjustable bedside food tray, wall mounted Toshiba 19" TV with remote, kettle, phone & lamp (excludes bed & hoist)
311A	Belluno height adjustable wooden framed mobile bed (Feb 2004) SWL 170Kg 240V s/n 9400876-001 C/W Drive MAT20BE Geltex single medical mattress *(beds last service date 22/5/18)
311B	Chiltern Invadex fixed electric hoist model 200LT s/n 200-000772 Asset ID 00382 test weight 190Kg c/w fixed bar approx 4m NB: This item has no record of Thorough Examination. The purchaser must ensure a Thorough Examination is carried out by a competent person prior to first use. The purchaser will be required to sign an undertaking confirming their agreement. *A work Method Statement and Risk Assessment must be reviewed and approved by the Auctioneer prior to any removal work commencing on this lot.
312	Three seater turquoise cloth sofa
313	Contents of room Walnut to include four drawer bed chest, lockable bedside cabinet (no key), two high back arm chairs, Sidhil hydraulic height adjustable bedside food tray, wall mounted Toshiba 19" TV with remote, kettle, phone & lamp (excludes bed)
313A	Belluno height adjustable wooden framed mobile bed s/n D11671 (April 2019) c/w Halo Multisoft medical single mattress *(beds last service date 22/5/18)

THE DOROTHY KERIN TRUST
Bidding Ends: THURSDAY 5TH DECEMBER 2019 from 1.00pm

Lot No.	Description
---------	-------------

314	Contents of room Sea Green to include three drawer bed chest, lockable bedside cabinet (no key), high back arm chair, wall mounted Toshiba 19" TV with remote, chair, kettle, phone & lamp (excludes bed)
314A	Belluno height adjustable wooden framed mobile bed (Sept 2000) SWL 250Kg 240V s/n 902117-001 c/w Bock pressure reducing replacement mattress model Herm 120 *(beds last service date 22/5/18)
315	Contents of room Rose to include white single bed and mattress, four drawer bed chest, lockable bedside cabinet, high back arm chair, height adjustable bedside food tray, wall mounted Toshiba 19" TV with remote, alarm clock, table, kettle, phone & lamp
316	Contents of room Primrose to include single bed and mattress, three drawer bed chest, lockable bedside cabinet (no key), high back arm chair, wooden bag stand, wall mounted Toshiba 19" TV with remote, kettle, phone & lamp
317	Contents of room Dorothy Kerin to include single bed and mattress, two drawer/one door wardrobe, five drawer vanity table, five drawer bed chest, one drawer bedside cabinet, high back arm chair, height adjustable bedside food tray, wall mounted Toshiba 19" TV with remote, kettle, chair, phone & lamp
318	Contents of room Wren to include single bed and mattress, three drawer vanity table, four drawer bed chest, high back arm chair & poof, height adjustable bedside food tray, wall mounted Toshiba 19" TV with remote, kettle, & phone
319	Contents of room Bishops to include single bed and mattress, single door wardrobe, lockable bedside cabinet (no key) three drawer vanity table, high back arm chair & poof, wooden bag stand, height adjustable bedside food tray, wall mounted Toshiba 19" TV with remote, alarm clock, kettle, & phone
320	Contents of room Nightingale to include single bed and mattress, lockable bedside cabinet (with key) three drawer vanity table, high back arm chair, Sidhil Hydraulic height adjustable bedside food tray, wall mounted Toshiba 19" TV with remote, alarm clock, kettle, & phone
321	Contents of office to include four desks, four swivel & tilt chairs, a stacking chair, four pedestals, desk fan, three drawer filing cabinet, paper shredder, guillotine, (excludes all IT)
322	Contents of three offices on the 2nd floor to include three desks, four pedestals, round meeting room table, three swivel & tilt chairs, three collapsible chairs, small table, metal three shelf unit, lamp, three phones, small bookcase, kettle & four drawer filing cabinet (excludes all IT)
323	Contents of Pilgrim Reablement Gym to include height adjustable massage table, a set of remedial parallel bars wall mounted Philips 19" TV (no remote), two chairs, Mini Bike 50 weights & various exercise equipment as lotted
324	Contents of Reservations office to include four section light oak veneer modula desks c/w privacy screens, four swivel & tilt chairs, four LG Ipecs LDP-7024 reception phones with direct station selectors, three steel four drawer filing cabinets, two Bisley multidrawer cabinets, wall clock & floor lamp (excludes IT)

THE DOROTHY KERIN TRUST
Bidding Ends: THURSDAY 5TH DECEMBER 2019 from 1.00pm

Lot No.	Description
---------	-------------

325	Contents of office to include three light oak veneer section wall mounted tables, four swivel & tilt chairs, four folding chairs, Rexel RDX2070 paper shredder Bisley four drawer filing cabinet, four Bisley multidrawer cabinets, safe (no key) lamp, side table, two phones & a fan (excludes IT)
326	Contents of room Chintz to include three drawer bedroom chest, lockable bedside cabinet (no key) lamp, phone, foot stool, wall mounted Philips 19" TV and remote (excludes bed & electric chairs)
326A	Belluno height adjustable wooden framed mobile bed (Feb 2002) SWL 150Kg 240V s/n N-916479/1 (no mattress)
326B	Seating Matters electric hydraulic mobile tilting chair s/n M051714887 (May 2017) max weight 300Kg
327	Contents of room Peach to include 3 drawer bedroom chest, lockable bedside cabinet (no key), high back arm chair, Sidhil hydraulic height adjustable bedside food tray, wall mounted Philips 19" TV and remote, phone & lamp (excludes bed)
327A	L1 100 height adjustable wooden framed mobile bed (Nov 2013) 240V c/w Care Base medical single mattress
328	Contents of room Oak including four drawer bedside cabinet, lockable bedside cabinet (no key), wall mounted Philips 19" TV and remote, Sidhil Hydraulic height adjustable bedside food tray, height adjustable bedside food tray, foot stool phone & lamp (excludes bed)
328A	Belluno height adjustable wooden framed mobile bed (Sept 2000) SWL 250Kg 240V s/n 902117/001 c/w Talley Quattro Prime pressure area care air medical mattress c/w pump s/n QPR12984-99-01-05-205 single mattress *(beds last service date 22/5/18)
329	Side table c/w two chairs
330	Contents of room Lilac to include lockable bedside cabinet with key, Sidhil Hydraulic bedside food tray, chair, lamp, phone, wall mounted Toshiba 19" TV with remote and a height adjustable bedside tray (excludes bed)
330A	Belluno height adjustable wooden framed mobile bed (Sept 2000) SWL 250Kg 240V s/n 902117/001 C/W Drive MAT20BE Geltex single medical mattress *(beds last service date 22/5/18)
331	Contents of room Lavender to include lockable bedside cabinet no key, Sidhil Hydraulic bedside food tray, two foot stools, fan, chair, lamp, phone, wall mounted Toshiba 19" TV with remote and a height adjustable bedside tray (excludes bed)
331A	Belluno height adjustable wooden framed mobile bed (Sept 2000) SWL 250Kg 240V s/n 902117/001-024 c/w Halo Multisoft medical single mattress *(beds last service date 22/5/18)
332	Contents of room Honey Suckle to include lockable bedside cabinet no key, four drawer bedside cabinet, Sidhil Hydraulic bedside food tray, two foot stools, highback armchair, chair, lamp, phone, wall mounted Toshiba 19" TV with remote and a height adjustable bedside tray (excludes bed)

THE DOROTHY KERIN TRUST
Bidding Ends: THURSDAY 5TH DECEMBER 2019 from 1.00pm

Lot No.	Description
---------	-------------

332A	Belluno height adjustable wooden framed mobile bed (Feb 2004) SWL 170Kg 240V s/n 9400876-000 C/W Drive MAT20BE Geltex single medical mattress *(beds last service date 22/5/18)
333	Contents of room Dove to include four drawer bedside cabinet, three drawer bedside cabinet, Sidhil Hydraulic bedside food tray, lamp, phone, wall mounted Toshiba 19" TV with remote and a height adjustable bedside tray (excludes bed)
333A	Belluno height adjustable wooden framed mobile bed model D11 671 (Jan 2001) SWL 170Kg 240V c/w Drive MAT20BE Geltex single medical mattress
334	Contents of room Emmaus to include three drawer bedside chest, lockable bedside cabinet (no key), two Sidhil Hydraulic bedside food trays, foot stool, lamp and phone, wall mounted Toshiba 19" TV with remote and a height adjustable bedside tray (excludes bed)
334A	Belluno height adjustable wooden framed mobile bed model D11 671 (Nov 2000) SWL 250Kg 240V s/n 904157/001 c/w Drive MAT20BE Geltex single medical mattress *(beds last service date 22/5/18)
335	Contents of room Bethany to include three drawer bedside cabinet, foot stool, lamp, phone and wall mounted Toshiba 19" TV with remote and a height adjustable bedside tray (excludes bed)
335A	Belluno height adjustable wooden framed mobile bed (Sept 2000) SWL 250Kg 240V s/n 902117/001 c/w Egerton hospital equipment Ltd Paragon Plus single medical mattress *(beds last service date 22/5/18)
336	Contents of room Carmel to include three drawer bedside cabinet, Huntleigh Nesbit Evans Hydraulic height adjustable bedside food tray, highback arm chair, lamp, and wall mounted Toshiba 19" TV with remote and a height adjustable bedside tray (excludes bed)
336A	Belluno height adjustable wooden framed mobile bed (Dec 2001) SWL 150Kg 240V s/n N-915327/1 c/w Halo Multisoft medical single mattress *(beds last service date 22/5/18)
337	Contents of room Cana to include three drawer bedside chest, highback arm chair, phone, bin, and wall mounted Toshiba 19" TV with remote and a height adjustable bedside tray (excludes bed)
337A	Belluno height adjustable wooden framed mobile bed (Sept 2000) SWL 250Kg 240V s/n 902117-001 c/w Care Base medical single mattress *(beds last service date 22/5/18)
338	Contents of room Sharon to include lockable bedside cabinet, highback arm chair, phone, bin, and wall mounted Toshiba 19" TV with remote (excludes bed)
338A	Belluno height adjustable wooden framed mobile bed (Jan 2001) SWL 250Kg 240V s/n 904888/001 c/w Talley Quattio Prime pressure area care air medical mattress c/w pump single mattress *(beds last service date 22/5/18)
350	Eight 4 section personal lockers & a quantity of staff uniforms as lotted

THE DOROTHY KERIN TRUST
Bidding Ends: THURSDAY 5TH DECEMBER 2019 from 1.00pm

Lot No.	Description
---------	-------------

351	Contents of stores to include large quantity of sealed bed pans, Sure supersoft dry wipes, Conti patient cleansing dry wipes, synthetic examination gloves, Flexicure 14 bag with T-Tap cloths,, anti-embolism stockings, protective pants, various dressings/bandages, changing pads, M40 Transystems Sani Cloth wipes, syringes, blood flow caps & stoppers etc., as lotted
352	Contents of kitchen to include MB200 water boiler, Service dishwasher, undercounter fridge, crockery & cutlery as lotted
353	Contents of three rooms (Elm-Tudor-Maple) to include three single beds, two tall bedside cabinets, dressing tables, three high back chairs, two height adjustable bedside food tables, three lamps, mirror, three phones, three wall mounted Toshiba TV's and remotes, three kettles & three bedside tables
354	Contents of Corner bedroom to include 3 drawer dark wood bedside chest, dark wood wardrobe, dark wood lamp table, single bed & mattress, high back chair, phone, lamp, alarm clock, chair, kettle, and wall mounted Toshiba 19" TV & remote
355	Contents of room to include large illuminated curved glass fronted display unit, desk, swivel & tilt chair, three high back arm chairs & phone
356	Contents of double bedroom blue to include double bed and mattress, two high back arm chairs, two tables, two matching bedside tables, large dark wood wardrobe, chait, 19" wall mounted TV & remote & two electric heaters * to be removed on last day of clearance
357	Contents of red & gold bedroom to include two single beds & mattresses, large dark wood wardrobe, two high back arm chairs, chair, kettle, phone, alarm clock, two electric heaters and 19" wall mounted TV & remote * to be removed on last day of clearance
358	Contents of pink & gray bedroom to include single bed & mattress, two high back chairs, kettle, phone, alarm clock
359	Contents of South bedroom to include single bed and mattress, 4 drawer chest & two matching 3 drawer bedside cabinets, lamp table, mirror, height adjustable bedside food tray, 19" wall mounted TV & remote, bag stand, lamp, phone & alarm clock
360	Contents of Russet bedroom to include two single beds & mattresses, 19" wall mounted TV & remote, kettle, phone, lamp & three dark wood tables * to be removed on last day of clearance
361	Contents of Camellia bedroom to include dark wood sleigh bed & mattress, wall mounted 19" TV & remote, kettle, phone, lamp
362	Contents of Heather bedroom to include small double bed +& mattress, two high back chairs, two glass top side tables with matching lamps, round lamp table, side table in dark wood with mirror, 19" wall mounted TV & remote
362A	Contents of linen room to include duvets, bed sheets, towels, blankets & toiletries as lotted
363	Contents of Magnolia bedroom to include single bed & mattress, high back chair, LEC minifridge on trolley, wallmounted 19" TV & remote, kettle, lamp, phone

THE DOROTHY KERIN TRUST
Bidding Ends: THURSDAY 5TH DECEMBER 2019 from 1.00pm

Lot No.	Description
---------	-------------

364	Contents of office to include 4 drawer filing cabinet two 2 door cabinets, desk, side table, various books & CD's, six chairs & a swivel & tilt chair
365	Book case & contents to include large number of religious books
366	Contents of office to include four desks, two pedestals, three swivel & tilt chairs, three 4 drawer filing cabinets, two 2 drawer filing cabinets, Bisley multidrawer filing cabinet & a Fellows PS60 paper shredder
367	Two mobile trollies and contents to include plates, bowls, cutlery, glasses as lotted
368	Soup warmer, hotplate & toaster
369	Indesit upright fridge
370	Instanta 150IF water boiler
371	Millsons hot drinks vending machine (no keys)
372	Oak extending dining room table fitted 5 claw legs with casters length 3.6m x 1.37m extended 2.5m x 1.37m closed c/w seven green & 4 blue wooden chairs
373	Contents of bedroom Fern and four offices to include two chairs, four swivel & tilt chairs, five high back arm chairs, small desk, three desks and pedestals, Rexel shredder, three phones, three multidrawer units, book case, two 4 drawer filing cabinets, three drawer bedside cabinet, double bed & mattress Toshiba wall mounted TV & remote (excludes IT)
374	Circular dining room table with carved wooden pedestal 1200mm diameter
375	Two circular dining room tables with carved wooden pedestal 1200mm diameter
376	Two circular dining room tables with carved wooden pedestal 1200mm diameter
377	Two wooden dining room tables 1220mm x 690mm
378	Wooden dumb waiter c/w contents to include glasses, cutlery, plates etc., as lotted
379	Wooden lamp table 350mm x 350mm and a wooden single pedestal dining table 690mm x 690mm
380	Four matching green cloth dining chair with arms
381	Four matching green cloth dining chairs
382	Four matching green cloth dining chairs
383	Four matching green cloth dining chairs
384	Four matching green cloth dining chairs
385	Four matching green cloth dining chairs
386	Three matching floral cloth dining chairs
387	Four green cloth high back arm chairs and a small white coffee table
388	Two blue cloth high back arm chairs c/w with small wooden lamp table
389	Contents of room to include 2 tables 1200mm x 750mm, 6 meeting room chairs, four drawer filing cabinet and a large quantity of arts & crafts material
390	Four tambour fronted cabinets L 800mm x W 400mm x H 2100mm
401	Contents of two counselling rooms to include five blue cloth armchairs, wicker glass top side table, 4 tier wicker shelving unit, desk, 2 phones, 2 lamps & a round coffee table

THE DOROTHY KERIN TRUST
Bidding Ends: THURSDAY 5TH DECEMBER 2019 from 1.00pm

Lot No.	Description
---------	-------------

402	Grey 2 seat cloth sofa along with 2 coffee tables
403	Contents of two offices to include office desk L1200mm x W800mm, three pedestals, five swivel & tilt chairs, 4 drawer filing cabinet, two reception phones & a Rexel shredder (excludes IT)
404	Alacer touch screen EPOS system c/w Epson TM-T 70II receipt printer & cash drawer
405	Two swivel & tilt reception chairs
406	Three cloth arm chairs, three cloth chairs, white plastic table & a wooden coffee table
407	4 tier mobile shelving unit c/w large quantity of swimming aids, floats, life jackets, spine board etc., as lotted
407A	Theo Davies & Sons Owestry wooden medical standing frame& harness
408	Arjo pool lift SWL 160Kg s/n GB480407074T NB: This item has no record of Thorough Examination. The purchaser must ensure a Thorough Examination is carried out by a competent person prior to first use. The purchaser will be required to sign an undertaking confirming their agreement. *A work Method Statement and Risk Assessment must be reviewed and approved by the Auctioneer prior to any removal work commencing on this lot.
409	Ergolet Luna Fixed Hoist model Luna 200/IPX4 s/n Lun/140084 (2014) c/w 6m cross rail & two 11m running rails & Luna Hoist Trolley NB: This item has no record of Thorough Examination. The purchaser must ensure a Thorough Examination is carried out by a competent person prior to first use. The purchaser will be required to sign an undertaking confirming their agreement. *A work Method Statement and Risk Assessment must be reviewed and approved by the Auctioneer prior to any removal work commencing on this lot.
409A	Ergolet Luna Fixed Hoist model Luna 200/IPX4 s/n Lun/140083 (2014) c/w 3m beam & two 2m cross sections & Luna Hoist Trolley NB: This item has no record of Thorough Examination. The purchaser must ensure a Thorough Examination is carried out by a competent person prior to first use. The purchaser will be required to sign an undertaking confirming their agreement. *A work Method Statement and Risk Assessment must be reviewed and approved by the Auctioneer prior to any removal work commencing on this lot.
409B	Ergolet Luna Fixed Hoist model Luna 200/IPX4 s/n Lun/140083 (2014) c/w 3m beam & two 2m cross sections & Luna Hoist Trolley NB: This item has no record of Thorough Examination. The purchaser must ensure a Thorough Examination is carried out by a competent person prior to first use. The purchaser will be required to sign an undertaking confirming their agreement. *A work Method Statement and Risk Assessment must be reviewed and approved by the Auctioneer prior to any removal work commencing on this lot.
410	Various used crutches & walking sticks as lotted
411	Freeway manual height adjustable shower trolley SWL 200Kg s/n 3742
412	Freeway manual height adjustable shower trolley SWL 200Kg s/n 5005
413	Timo Linak model 155030 hydraulic shower trolley SWL 200Kg (2015)

THE DOROTHY KERIN TRUST
Bidding Ends: THURSDAY 5TH DECEMBER 2019 from 1.00pm

Lot No.	Description
---------	-------------

414	Plinth 2000 extra wide electric 2 section massage table 1m wide 240v s/n 40EBGZ8T20294A
415	Plinth MFG height 3 section adjustable hydraulic massage table s/n 503/H/S/4491/131
416	Plinth MFG height 3 section adjustable hydraulic massage table s/n 503/H/S/1197/678
417	Arjo DA1021 stainless steel mobile shower trolley s/n 380459484-1
419	Ten aluminium outside patio chairs
420	Two bent wood elbow chairs
421	Aidapt mobile shower chair SWL 190Kg s/n 15110063
422	Mobile commode
423	Two mobile shower chairs
424	Four various height adjustable mobile walking frames & one folding frame
425	Eight Domyos exercise mats c/w wall mounted holder
426	Lomax folding wheel chair Code EIS 7003N batch FF241 (2007)
427	Wooden mobile posture chair
428	Height adjustable foot stool
429	Various anatomy displays & four posters as lotted
431	Mobile mirror
432	Tunturi B30 cardio fit bike SWL 110Kg s/n 16M5AFN0089
432A	Kettler Stratos Sport Exercise Bike
432B	Kettler Stratos Sport Exercise Bike
433	Arjo NTB2000 Sara Steady aid SWL 180Kg s/n NTB-01372
434	Arjo Sara 3000 standing and raising aid SWL 200Kg s/n STLA0803G907
435	set of remedial height adjustable pallellel bars
436	set of remedial height adjustable pallellel bars
437	Various exercise equipment to include 3 balance boards, marker cones, 3 exercise balls, weights & matts as lotted
438	Two dark wood carved side tables/cabinets
439	Dark wood carved corner cabinet and a drop leaf table
440	Two matching framed prints by Cries of London Do you want any matches & Turnips & Carrots
441	Framed print of a painting by W Hanford
442	Framed print by W Fitch Magnolia Campbellii
443	Large framed & numbered print by Celia Rosser Banksia Cazter 45/100
444	Framed print by AF Silverthorn Mixed Clematis
445	Framed & signed limited edition print of an original painting by Charles Bone Burswood 327/500
446	Five various prints of Burswood Estate
447	Two framed photos of Burswood Estate
448	Framed pictures of Dorothy Swift Strawson nee Bayles
449	Old style framed mirror
450	Two old style framed mirror

THE DOROTHY KERIN TRUST
Bidding Ends: THURSDAY 5TH DECEMBER 2019 from 1.00pm

Lot No.	Description
---------	-------------

451	Two old style framed mirror
452	Nine various mirrors as lotted
453	Framed tapestry of Saint Francis of Assisi
454	Two framed flower tapestries
455	Framed flower tapestry Peace on earth
456	Three framed tapestries
457	Ten Anglican old & new hard cover Hymn books by Kevin Mayhew
458	Ten Anglican old & new hard cover Hymn books by Kevin Mayhew
459	Twenty Anglican old & new hard cover Hymn books by Kevin Mayhew
460	Twenty Anglican old & new hard cover Hymn books by Kevin Mayhew
461	Twenty Anglican old & new hard cover Hymn books by Kevin Mayhew
462	Five wooden framed blue cloth elbow chairs
463	Eleven wooden framed blue cloth stacking chairs blue cloth
464	Eleven wooden framed cream cloth stacking chairs blue cloth
465	Five wooden framed cream cloth elbow chairs cream cloth
466	Three coffee tables (not including contents)
467	Two folding 2 section projector tables
468	Folding Newspaper stand & folding reading table
469	Pray bench c/w 6 kneeling pads
470	Three tread folding steps
471	Three tread folding steps
472	Three tread folding steps
473	Luggage barrow
474	Folding sack barrow
475	Aluminium 6 tread A frame step ladder
476	Aluminium 4 tread A frame step ladder
477	Sentry home/office fire combination safe
478	Wooden 7 drawer plans chest
479	Nine matching framed samples to include 2 decorative stitches, pulled thread work and raised satin stitch, various filling stitches, English quilting, Italian quilting, shadow quilting, Oriental laid & smocking
480	Two matching framed prints 'Butterflies'
481	Two matching framed prints by Bunnie Oliver last of the snow & bright winters day
482	Two matching framed city prints
483	Two matching framed prints by Maria Sibylla Meriam Rotie Lilie No XXII & Metamor Phosis No XXI
484	Two matching framed prints by Valeine Baines Rose Tango & Rose Picasso
485	Two matching framed Laura Ashley prints Dogwood & Cherry Blossom
486	Two Matching Water Colours of Burswood Estate by S.A.M.
487	Four matching framed prints of birds
488	Three matching framed prints of flowers Grandiflora, Crocata & Hyalina

THE DOROTHY KERIN TRUST
Bidding Ends: THURSDAY 5TH DECEMBER 2019 from 1.00pm

Lot No.	Description
---------	-------------

489	Five various size matching framed prints by Manton Lowe Melbourne, Lonsdalke Victoria, Paino to Beach, Seva & Republique Jailon
490	Large print of a painting by G Morland
491	Large print of a painting of 2 men fishing on river
492	Large print of a painting by Leonard Casley Sunshine & Wind in March
493	Five various size matching framed prints by Manton Lowe Corsica, Vogue France, Monte Carlo, Lavento & last winter light
494	Two matching framed prints of landscape (one cracked glass)
495	Florentine Design oak framed print of Quercus Macrocarpa
496	Framed print of Leonardo da Vinci 'The virgin of the rocks'
497	Twelve various framed prints of various religious scenes
498	Eight large framed prints of flower & fruits as lotted
499	Sixteen various sized prints of flowers & trees as lotted
500	Fourteen large framed prints of various views & scenes with water
501	Nine various framed prints of water scenes & boats
502	Seven various framed prints of scenery
503	Seven various framed prints of scenery, buildings & houses
504	Seven various framed prints of church scenes
505	Seven various framed prints of buildings
506	Two matching framed prints by Manton Lowe Vernazza & Suisse
507	Two matching framed prints by Manton Lowe Study & winter lights
508	Three matching framed prints by Manton Lowe Melbourne, Palmires & Venice

THE DOROTHY KERIN TRUST
Bidding Ends: THURSDAY 5TH DECEMBER 2019 from 1.00pm

1: Conditions

These conditions, together with any 'Special Conditions' or 'Notices to Purchasers', are the only terms and conditions subject to which Lambert Smith Hampton (LSH) (the "Auctioneer") acting as agents for the Vendor (the "Vendor") will contract with buyers (the "Buyer"). Bidding for any lot shall be deemed to be an acceptance of these conditions and any conditions in the Notices to Purchasers. If there is any inconsistency between any of these conditions and anything in the Notices to Purchasers, then those in the Notices to Purchasers shall prevail.

2: Inspection and Description

- 2.1 Buyers have a responsibility to make their own inspection and investigation of the lots at the time(s) and at the premises specified, and to satisfy themselves on all matters affecting the lots, and to inspect and satisfy themselves prior to the sale, as to the condition and description of a lot, its fitness and suitability for purpose.
- 2.2 Goods are believed to be correctly described but all goods are sold with faults, imperfections and errors of description.
- 2.3 Neither the Vendor nor the Auctioneers, their servants or agents makes or gives, nor has any person in the employment of the Auctioneers any authority to make or give, any representation or warranty in relation to any lots.

3: Limitation of Liability

- 3.1 Neither the Vendor nor the Auctioneers, their servants or agents shall be liable for any loss or damage suffered by the Buyer arising out of or in connection with any defects or deficiencies in any lots purchased, errors of description in the auction catalogue, any mis-statements as to any matter affecting the lots or the failure of the lots to fulfill the functions for which they were intended
- 3.2 The Auctioneer's and the Vendor's total liability for breach of contract or negligence is limited to the Bid Price.
- 3.3 Neither the Auctioneers nor the Vendor shall be liable for any indirect or consequential loss or damage (whether for loss of profit, loss of business or otherwise) incurred by the Buyer whatsoever.
- 3.4 Nothing in these conditions excludes or limits the liability of the Auctioneers or Vendor for death or personal injury caused by their negligence or fraudulent misrepresentation.
- 3.5 Nothing in these conditions shall prejudice the statutory rights of a consumer who shall be bound by these conditions only insofar as they are consistent with such statutory rights.

4: Conduct of Sale

- 4.1 The Auctioneers reserve the right in their absolute discretion to refuse admission to the premises and grounds to any person.
- 4.2 The conduct of the sale shall be at the Auctioneer's sole discretion and the Auctioneers reserve the right to refuse any bids without giving any reason. If any dispute of whatsoever nature relating to a bid shall arise, such dispute shall be determined by the Auctioneers in their absolute discretion and whose decision shall be final and binding on all parties.
- 4.3 Each bidder must register prior to submitting any bids in Online Sales. The Auctioneer reserves the right to reject any registration at its sole discretion.
- 4.4 The Vendor and the Auctioneers reserve the right to fix a reserve price for any lot.
- 4.5 No bid may be withdrawn after the close of bidding.
- 4.6 The Vendor or the Auctioneers have absolute discretion to withdraw consolidate or divide at any time any lot.
- 4.7 The highest bidder for each lot at the close of bidding shall be the Buyer, subject to approval by the Auctioneers and the Vendor. The Sale Price is exclusive of the buyer's premium and VAT. The highest bid at the close of bidding subject to approval by the Auctioneers and Vendor also marks a conclusion of a contract of sale between the Vendor and the Buyer.
- 4.8 In making a bid for any lots, the Buyer does so as principal. The Buyer will be held personally and solely liable for a bid unless the Auctioneers have previously agreed in writing with the Buyer that the bidder will do so on behalf of an identified third party acceptable to the Auctioneers. In circumstances where the Auctioneers have so agreed, the Buyer and the third party will jointly and severally be liable for all obligations arising from the bid where a third party shall be bound by these conditions by the individual bidding as his agent in the same way as if he were bidding personally.

5: Price

The price payable by the Buyer for the purchase of the lots secured shall be the sale price, being the highest bid and accepted by the Auctioneer in accordance with condition plus the buyers premium and any other associated costs (if any) and VAT applicable at the prevailing rate.

6: VAT

The price of the goods purchased is exclusive of Value Added Tax (VAT), which where applicable, the Buyer shall be additionally liable to pay to the Auctioneer

7: Risk and Title

- 7.1 Insurance: As from the date and time the Buyer is declared, all risks in and relating to the Goods purchased, shall pass to the Buyer and the Buyer is strongly advised to effect insurance for these risks at once. In no circumstances will the Auctioneers or the Vendor be responsible if any Goods or part thereof be lost, stolen, damaged or destroyed after the Buyer is declared.
- 7.2 Title: The Vendor shall only sell such title to the Goods as he may have. Neither the Auctioneers nor the Vendor warrants the Vendor's good title to any of the Goods and if it is found that the Vendor does not have title or unencumbered title to any of the Goods purported to be sold under these conditions the Buyer expressly agrees that it shall have no right either to rescind the contract or to claim damages or a reduction in the consideration paid or payable under the contract.
- 7.3 Title to each of the Goods will not pass until:-
 - (a) all debts owed by the Buyer to the Auctioneers (whether part-paid secured or otherwise) are settled, for the avoidance of doubt the debts shall not be settled until (where payment or part payment is made by cheque) all cheque(s) in question have been cleared; and
 - (b) such Goods have been removed from the premises at which the sale is held or where the Goods are being stored in their entirety.

8: Removal

- 8.1 No lot or part thereof can be removed until payment in cleared funds (cash, approved Bankers Draft, BACS or Chaps) has been made in full or (where any part of the payment was made by cheque) the cheque has cleared in the Auctioneer's account. No lot shall be removed without the authority of the Auctioneer and unless under the supervision of the Auctioneer's servants or agents.
- 8.2 Removal shall take place only up to 5.00 pm and must be completed no later than the dates and times specified and published within the Notice to Purchasers or any date and time specifically declared thereafter, in writing, by the Auctioneer or written authority is obtained from the Auctioneers for clearance after that time.
- 8.3 The Buyer has no right to anything not described in the auction catalogue.
- 8.4 Delivery of lots sold will be made only to the declared Buyer and no transfer of any lot or part of a lot to any other person will be recognised.
- 8.5 Prior to the removal of any lot the Vendor may rescind the contract for the sale of that lot and refund to the Buyer any money paid by the Buyer for the lot should any third party claim title to or possession of any part of the lot.
- 8.6 The Buyer will be responsible for removal of lots at his own expense and must provide his own labour, and equipment.
- 8.7 The Auctioneers require that in pursuit of safe working practice all equipment used for lifting and transportation should be covered by appropriate insurance, safety documentation set out by current Health & Safety legislation at the time and registration documents (in particular, but not limited to, cranes, lifting equipment, tackle and fork lift trucks). Such documentation shall be produced to the Auctioneers and if the Buyer fails to produce such documentation on request for inspection the Auctioneers reserve the right to refuse to release the lot and/or rescind the sale in which event the provisions of condition 8 will apply. Equipment may only be used by operatives who have the valid and appropriate licences to use such equipment
- 8.8 Appropriate Personal Protective Equipment (PPE) must be worn during these activities and due regard paid to safe material handling practices.

9: Damage to Premises

The Buyer shall be responsible for the removal of all goods purchased at his own expense and risk and such removal must be carried out safely and lawfully and in accordance with any conditions of sale of which the Buyer is notified. For the avoidance of doubt removal includes where applicable disconnection from the mains electricity supply and the detachment of any lots which are fixed. All electrical installations must be carried out by a Certified electrician and left in a safe condition during and after the removal and the use of explosives or flame cutting equipment or any other potentially hazardous or inflammatory process shall not be permissible on the site without the express written consent of the Auctioneers. The Buyer shall be responsible to insure against and to make good any injury or damage to persons or property caused by the Buyer, their carriers, servants or agents detaching, disconnecting or removing any goods purchased by the Buyer. The Buyer shall produce his insurance documentation to the Auctioneers on request and if the Buyer fails to produce such documentation the Auctioneers reserve the right to refuse to clear the lot and/or rescind the sale. The Buyer shall indemnify the Auctioneers for any damage or loss which the Auctioneers may suffer in respect of loss, damage or injury suffered by the Buyer's agents or employees or any third party arising from the removal. At its discretion the Auctioneers may require the payment of a deposit to the Auctioneers prior to and/or during the removal which will be refunded on the removal being completed to the Auctioneer's satisfaction. If the Buyer refuses to deposit such monies, the Vendor or the Auctioneers may refuse the Buyer access to the premises for the purposes of removing the lot purchased by them and/or rescind the sale in which event the provisions of condition 8 will apply. The Auctioneers reserve the right to stop the removal of a lot by a Buyer, his agents or employees, if it appears to the Auctioneers or its agents or employees that the removal is being carried out in an unsafe or unsatisfactory way.

10: Default by Buyer

Upon failure by the Buyer for whatsoever reason:-

- (i) to pay a deposit in full if required under the Conditions of Sale or special notices; or
- (ii) to pay the purchase price in full on the due date; or
- (iii) to provide any documentation required under these conditions; or
- (iv) to remove the goods in a safe or satisfactory way; or
- (v) to remove any lot from the premises on or before the date specified for removal,

The Vendor will be entitled to rescind the contract forthwith without incurring any liabilities to the Buyer and, without prejudice to any claims of the Vendor and/or the Auctioneers against the Buyer arising from breach of contract or otherwise, upon rescission as aforesaid the following provisions apply:

- (a) all monies deposited in part payment will be forfeited and used to pay the Vendor's and/or Auctioneer's expenses referred to in paragraph (d) below;
- (b) if the lots have been removed in breach of these conditions, the Vendor and/or the Auctioneers, their servants or agents may enter the premises of the Buyer to recover such lots;
- (c) lots may be re-sold or otherwise disposed of by the Auctioneers in the manner they feel appropriate at their sole discretion and any deficiency arising upon the resale together with the expenses of it shall be due as a debt from the Buyer in default upon the first sale. The Buyer consents to such a resale on the Auctioneer's conditions of business applicable at the time of resale. Neither the Auctioneers nor the Vendor shall be liable to account to the Buyer in the event of a re-sale at a higher price than the price contracted to be paid by the Buyer. The Buyer waives any claim in such a case that he may have title to the lot and agreed that any re-sale price shall be deemed commercially reasonable;
- (d) the Buyer will be responsible for the specified time for final removal for all losses and expense incurred by the Vendor and/or the Auctioneers including storage, security and removal expenses, the costs of re-selling or disposing of lots and Auctioneer's commission.

11: Auctioneer as Agent

The Auctioneers act only as Agents for and on behalf of the Vendor and shall not be held responsible for any action or default on the part of either the Vendor, bidders or the Buyer. Any concluded contract of sale is made directly between the Vendor and the Buyer.

12: Accident or Damage

Neither the Auctioneers nor the Vendor will accept any responsibility for any accident, (except for that arising out of its negligence, or the

negligence of its agents or employees, resulting in death or personal injury) howsoever caused to any person which may occur whilst on the Auctioneer's premises, the Vendor's premises or such other premises used to hold the auction or to store the lots before during or after the sale and any person entering the premises does so at his own risk and is deemed to have notice of the condition of the premises and their contents.

13: The Consumer Protection Act 1987

No lots are sold as new.

14: Health & Safety At Work

It is expressly brought to the Buyer's attention and that of potential buyers, at the time of sale, any item of plant, machinery or equipment contained in the goods may not necessarily comply with the Health and Safety at Work Act 1974; the Environmental Protection Act 1990; Construction Design and Management Regulations 2015 or any other Act of Parliament or regulations thereunder governing the use of that plant, machinery or equipment in a working environment. Buyers of any such plant, machinery or equipment are hereby required to ensure so far as reasonably practicable that such item will be safe and without risk to health and that the use of any such items at a place of work within the EEC & the United Kingdom does not contravene any such Act of Parliament or regulation applicable to such use.

15: Dangerous Substances

It is expressly brought to the attention of Buyers (and potential buyers) that certain types of plant or main service installations could contain blue and white asbestos, dangerous chemicals and hazardous waste which if not handled correctly during their removal from the premises could be in breach of the Health and Safety at Work Act 1974, Sections 2-13 Control of Substances Hazardous to Health Regulations 2002 (COSHH) or other current legislation regulating the use of such substances in a working environment. The Buyer shall ensure so far as is reasonably practicable that they comply with the Health and Safety at Work Act 1974, COSHH and other current legislation in connection with the removal, handling and transport of such dangerous substances and or hazardous waste or shall employ a specialist contractor to remove them. The Buyer shall, on request, satisfy the Auctioneers in relation to its removal procedures, and the removal of waste materials must be undertaken by an approved and licensed contractor. The Buyer will indemnify the Vendor, their servants or agents against any loss, damages or expenses suffered by them as a result of the Buyer's or a sub-contractor's failure to comply with this legislation.

16: Notices

Any notices or other communications shall be in writing and, if sent by post, shall be deemed to have been received by the addressee on the second working day after posting or, if the addressee is outside the United Kingdom, on the fifth working day after posting. If any written notice is delivered by hand, it shall be treated as having been received at that time. Any notice sent to the Auctioneers shall be sent to the Auctioneer's address as set out in the auction catalogue, or displayed on the auctioneer's web site on the notice specific to that sale. Any notice which the Auctioneers send to the Buyer may be sent to the Buyer's last address known to the Auctioneer.

17: Third Party Rights

Save as expressly provided in these conditions, no term of these conditions shall be enforceable under The Contracts (Rights of Third Parties) Act 2001 by a third party.

18: Governing Law

These Conditions and any Conditions contained in the Notices to Purchasers, along with all associated transactions and all connected matters shall be governed and construed in accordance with English Law.

19: Severability

In the event that any provisions of these conditions shall be held unenforceable for any reason, the remaining conditions shall remain in full force and effect.